

HAYDEN SINGLE LEVER TAP

PRODUCT CODE

› HAY/SS

FINISH

› Stainless Steel

FEATURES

› Solid stainless steel

PARTS INCLUDED

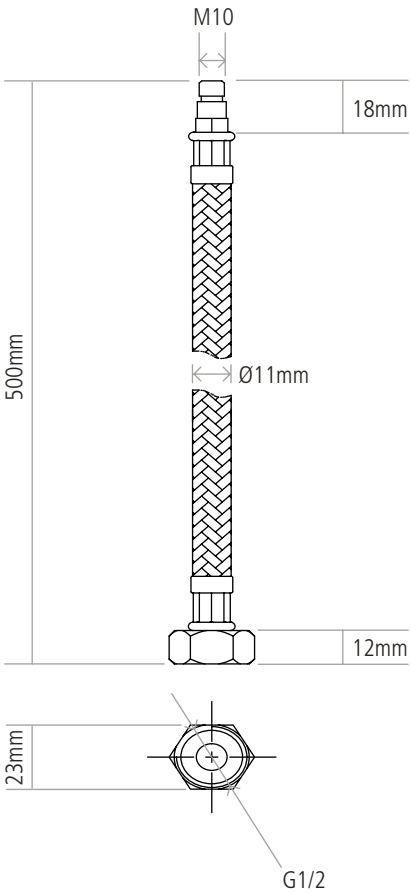
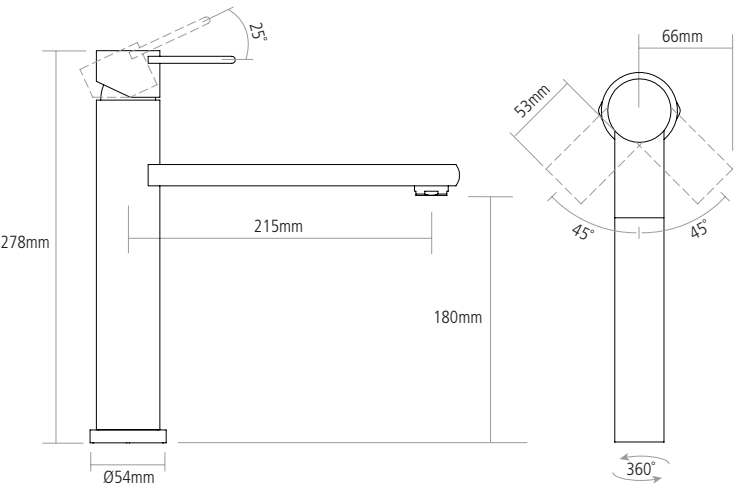
- › Support bracket
- › 2 x Flexi tails
- › Aerator Key



↔ DIMENSIONS

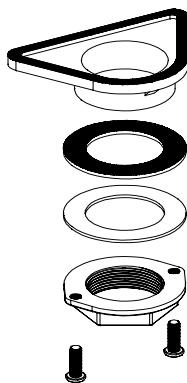
Spout Diameter	-
Spout Aerator Size	Ø24mm
Usable Thread Length	60mm
Spare Part Kit Code	KIT/HAY/SS
Boxed Weight	2.5kg
Tap Weight	1.79kg
Box Dimensions	440 x 320 x 70

Tail Inlet / Outlet Size	M10 / 1/2"
Inlet Type / Length	Flexible stainless braided hose / 500mm



Worktop cut out 35mm required

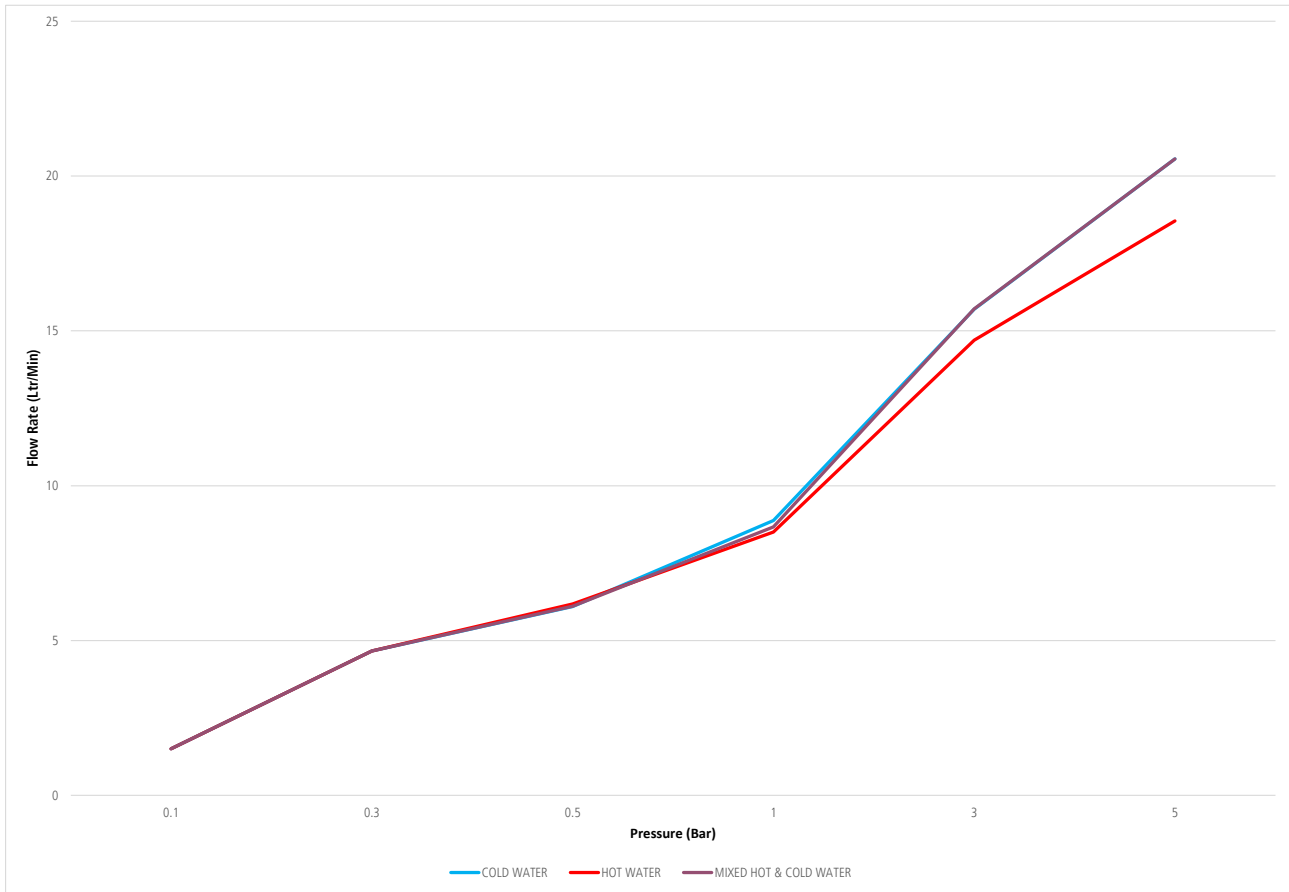
FIXING TYPE



TAP FLOW INFORMATION

Min/Max Water Pressure	0.5 / 5 bar
Control Valve type	Single lever ceramic valve
Flow type	Single
Aerator included	Y

FLOW RATES



Bar pressure	Flow rate [ltr/min]		
	Cold water	Hot water	Mixed hot & cold water
0.1	1.5	1.5	1.5
0.3	4.66	4.66	4.66
0.5	6.1	6.18	6.11
1	8.87	8.5	8.67
3	15.7	14.7	15.71
5	20.55	18.55	20.55