

JOYA 3IN1 TAP

PRODUCT CODE

› JOY3IN1/GD

FINISH

› Gold

FEATURES

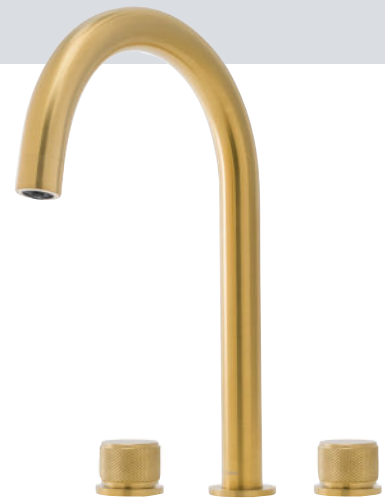
- › Solid stainless steel with PVD finish
- › Supplies fresh cold water, regular hot water and filtered 98°C steaming water
- › Safety mechanism for steaming water control
- › Cool touch spout

PARTS INCLUDED

- › 3 x Support bracket
- › 5 x Flexi tails
- › Touch control pressurised boiler [3.5Ltr tank, temperature range of 25°C to 98°C] and fittings
- › PURIT17 Filter Kit and fittings

OPTIONAL EXTRAS

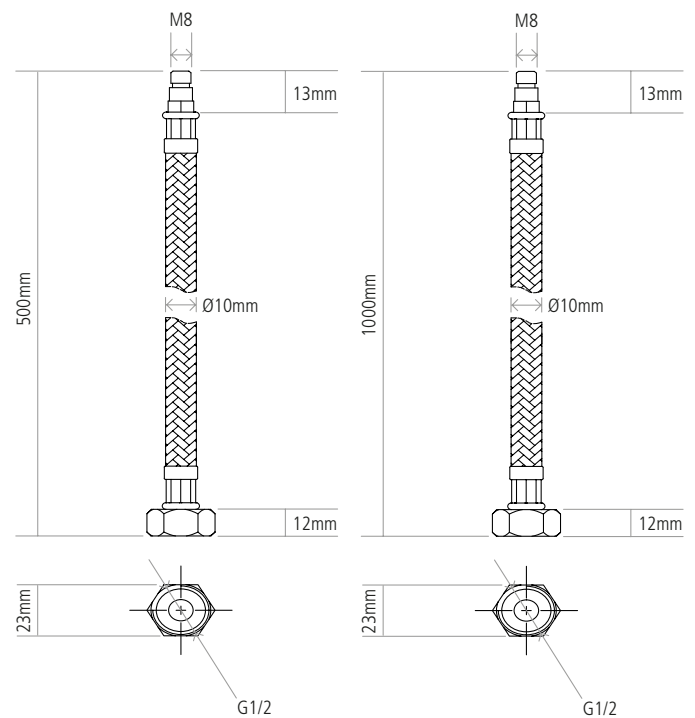
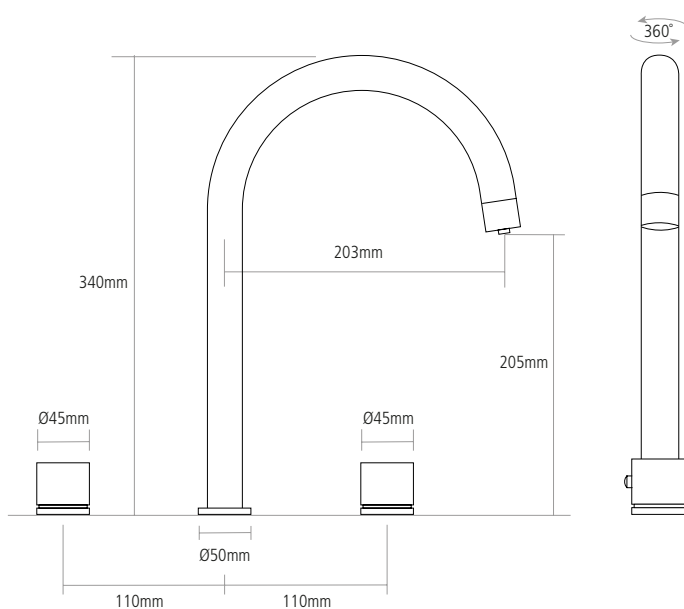
- › FILTERMETER Digital filtered water meter with flow rate display
- › PURIT13 Replacement water filter



DIMENSIONS

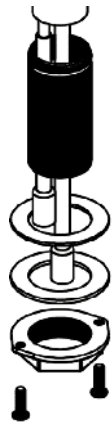
Spout Diameter	Ø30mm
Spout Aerator Size	Ø20mm
Usable Thread Length	40mm
Spare Part Kit Code	KIT/JOY3IN1
Boxed Weight	3.6kg
Tap Weight	3.1kg
Box Dimensions	680 x 395 x 70mm

Tail Inlet / Outlet Size	M8 / 1/2"
Inlet Type / Length	Flexible stainless braided hose / 500mm & 1000mm (Boiler to tap connection)



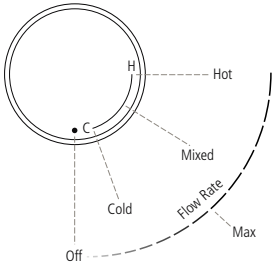
Worktop cut out 35mm required

FIXING TYPE



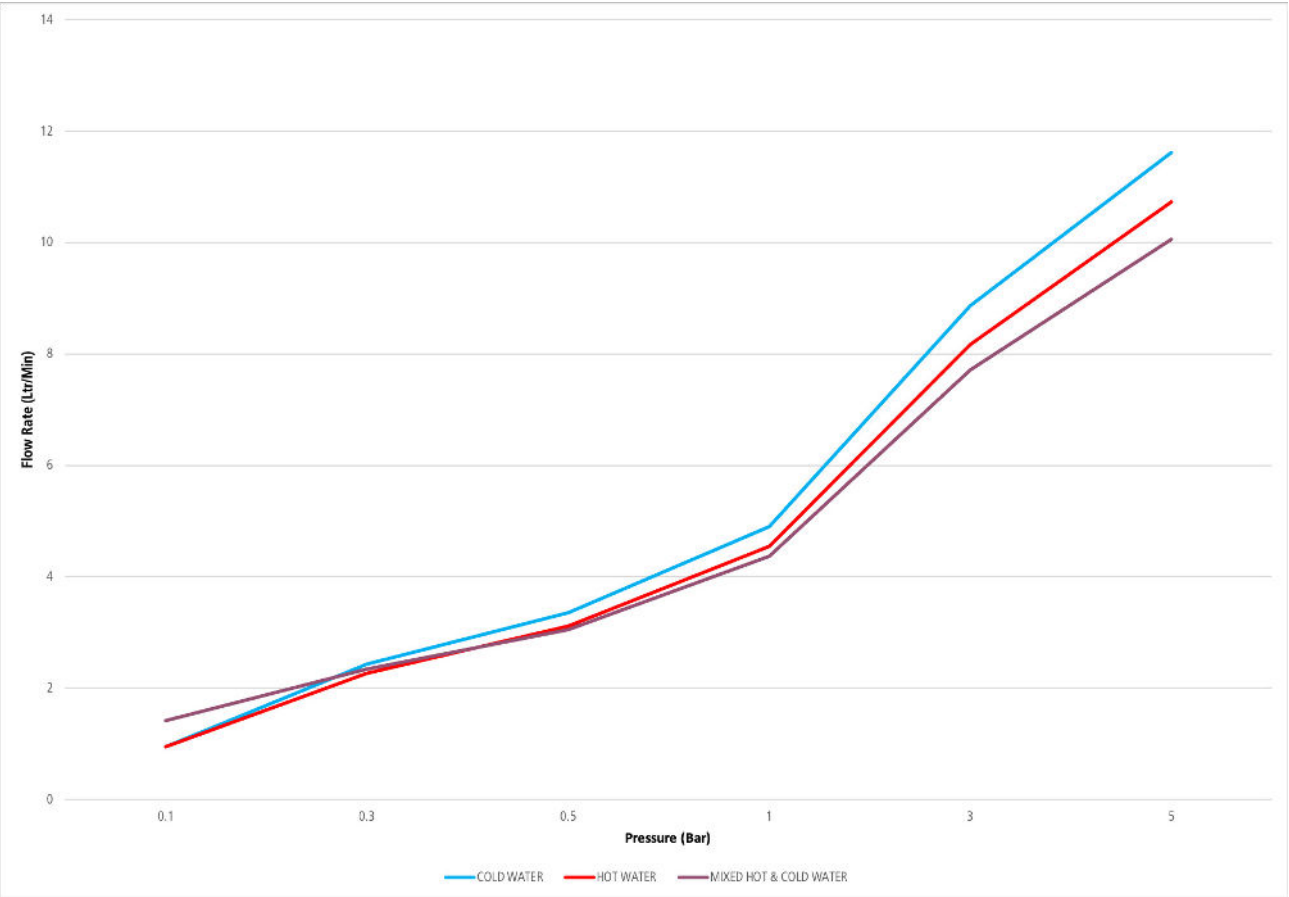
TAP FLOW INFORMATION

Min/Max Water Pressure	0.5 / 7 bar
Control Valve type	Boiling water lever = Quarter turn ceramic valve Hot/ cold lever = Progressive valve (see diagram below)
Flow type	Single [Separate flow for boiling & filtered water]
Aerator included	Y



PROGRESSIVE
VALVE EXPLAINED

FLOW RATES



Flow rate [ltr/min]			
Bar pressure	Cold water	Hot water	Mixed hot & cold water
0.1	0.95	0.95	1.42
0.3	2.43	2.26	2.34
0.5	3.36	3.11	3.05
1	4.9	4.55	4.37
3	8.86	8.16	7.71
5	11.61	10.73	10.05