

FOSSO 4IN1 TAP

PRODUCT CODE

› FOS/4IN1/SS

FINISH

› Stainless Steel

FEATURES

- › Solid Stainless Steel
- › Supplies fresh cold water, filtered cold water, regular hot water and filtered 98°C steaming water
- › Safety mechanism for steaming water control
- › Cool touch spout
- › WRAS approved

PARTS INCLUDED

- › PURIT17 Filter Kit and fittings
- › Touch control pressurised boiler [3.5Ltr tank, temperature range of 25°C to 98°C] and fittings
- › PURIT17 Filter Kit and fittings

OPTIONAL EXTRAS

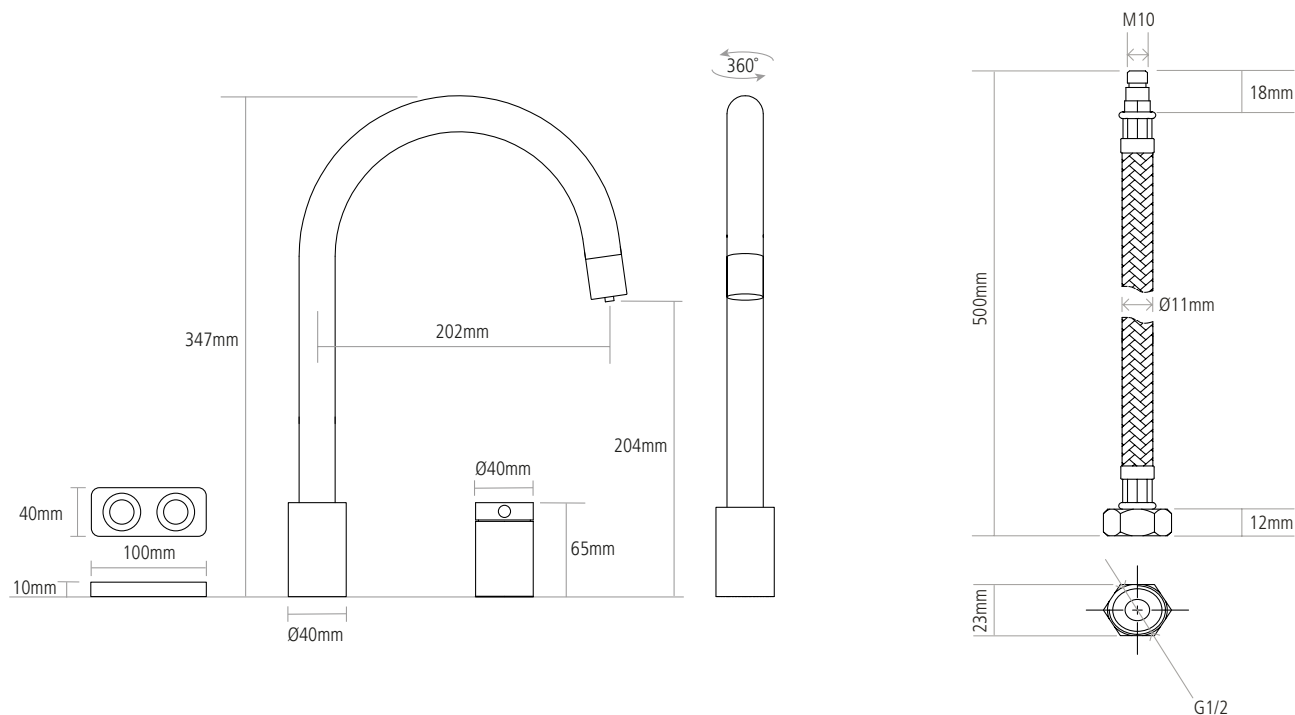
- › FILTERMETER Digital filtered water meter with flow rate display
- › PURIT13 Replacement water filter



DIMENSIONS

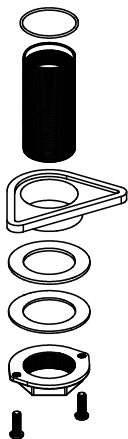
Spout Diameter	Ø25mm
Spout Aerator Size	Ø21mm
Usable Thread Length	50mm
Spare Part Kit Code	KIT/FOSSO
Boxed Weight	3.2kg
Tap Weight	2.7kg
Box Dimensions	630 x 320 x 75

Tail Inlet / Outlet Size	M10 / 1/2"
Inlet Type / Length	Flexible stainless braided hose / 500mm



Worktop cut out 35mm required

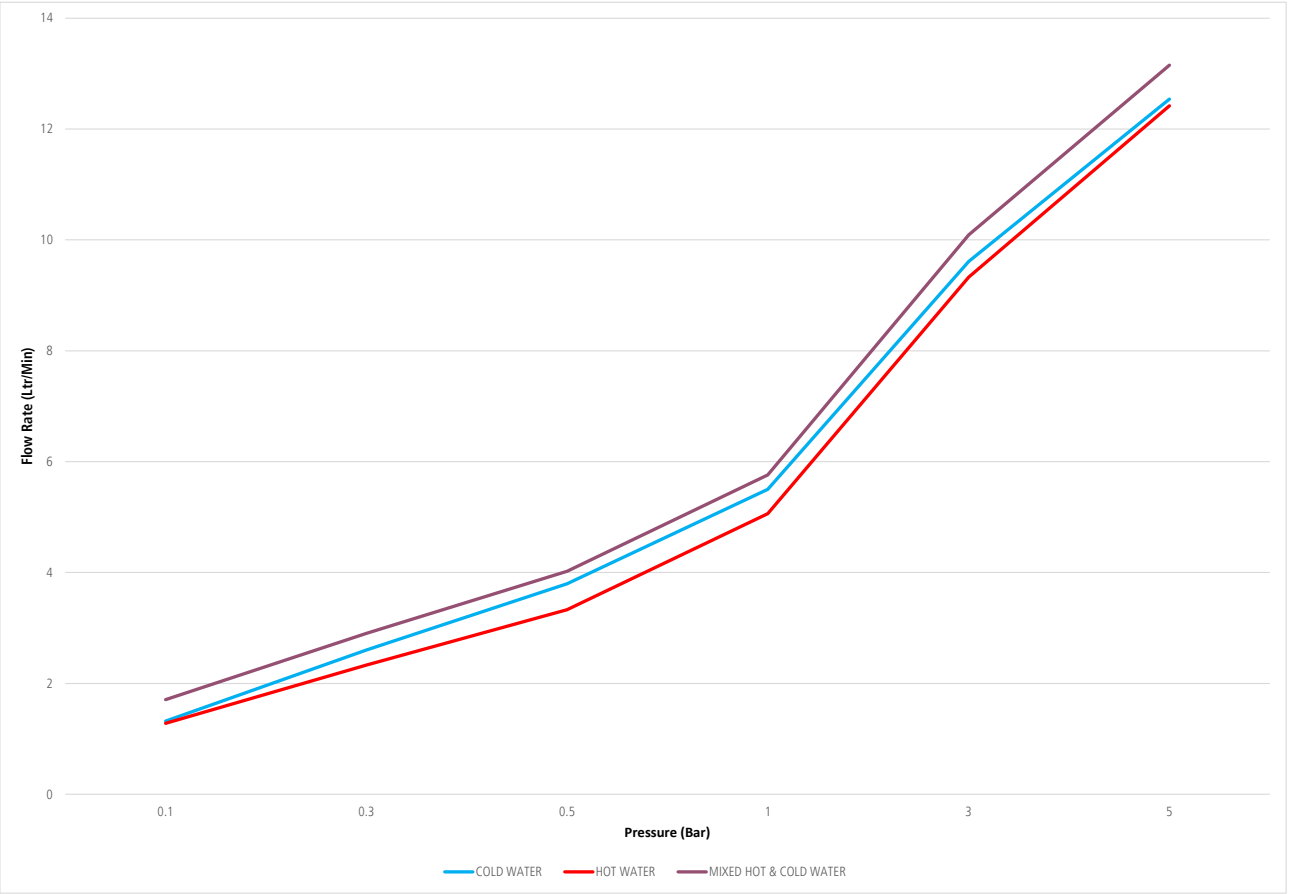
FIXING TYPE



TAP FLOW INFORMATION

Min/Max Water Pressure	0.5 / 7 bar
Control Valve type	Boiling water / Filtered Water = Electronic button control Hot/cold water = Single lever
Flow type	Dual
Aerator included	Y

FLOW RATES



Bar pressure	Flow rate [ltr/min]		
	Cold water	Hot water	Mixed hot & cold water
0.1	1.32	1.28	1.71
0.3	2.6	2.33	2.9
0.5	3.8	3.33	4.02
1	5.5	5.06	5.76
3	9.61	9.33	10.09
5	12.54	12.42	13.15