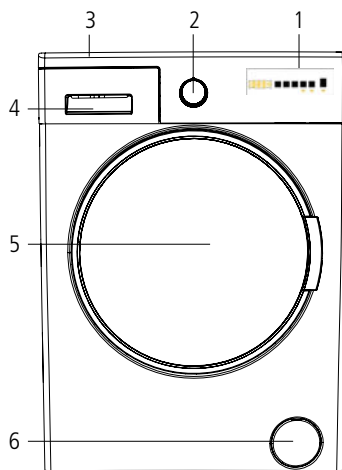




WMF1100 QUICK USER GUIDE

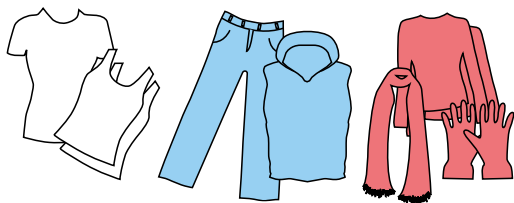
DESCRIPTION OF THE MACHINE

1. Electronic Display
2. Programme Dial
3. Upper Tray
4. Detergent Drawer
5. Drum
6. Pump Filter [behind plinth when installed]



WASHING

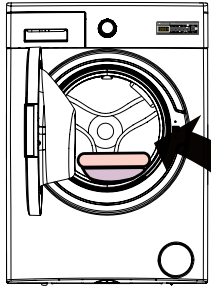
- › Connect the washing machine to a power socket.
- › Open the water supply.



1. PREPARING YOUR LAUNDRY

Separate your laundry according to type [cotton, synthetic, sensitive, woollen, etc.], their temperature [cold, 30°, 40°, 60°, 90°] and degree of contamination [slightly stained, highly stained].

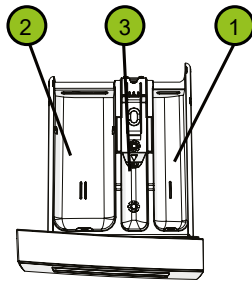
2. PLACING LAUNDRY INTO THE WASHING MACHINE



Open the door of your machine. Spread your laundry evenly in the drum.

3. PUTTING DETERGENT INTO THE WASHING MACHINE

1. Pre-washing compartment
2. Main washing compartment
3. Softener compartment



4. PROGRAMME SELECTION

Use the control knob to select the required programme. The knob can be rotated left or right to select the programme. Ensure that the programme knob is exactly on the programme you want to select.

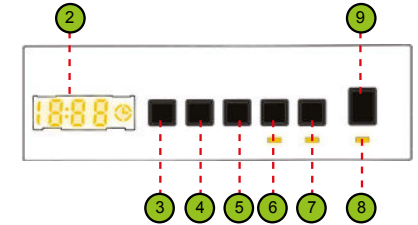
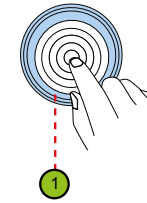


5. ELECTRONIC DISPLAY

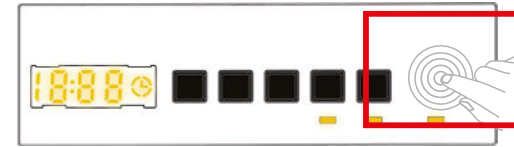
The display panel shows the washing delay timer [if set], temperature selection, spin speed, any additional functions selected. The display panel shows "End" when the selected programme is complete. The display panel also indicates if a fault has occurred with your

6. OPERATING YOUR MACHINE

1. Programme Dial
2. Electronic Display
3. Water Temperature Adjustment Button
4. RPM Speed Adjustment Button
5. Delayed Start Button
6. Rapid Wash Button
7. Easy Iron Button
8. Start/Pause Button
9. Operating Your Machine

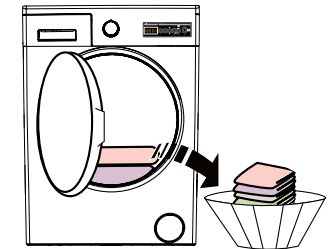


Press the Start/Pause button to start a selected programme or pause an active one.



7. REMOVING LAUNDRY

Your machine will stop by itself as soon as the programme you have selected finishes. "End" will flash on the electronic display and 3 tones will sound.



8. MAINTENANCE

1. It is recommended that you clean your pump filter once every 2 months.
2. It is recommended that you clean your detergent drawer once every 2 months.
3. It is recommended that you clean the filter on your water inlet valve once every 2 months.
4. Clean the filter at the end of the valve every 2 months.

! If the washing machine does not spin, the unbalanced load system may have been activated. The unbalanced load control system will try to distribute your laundry evenly to prevent damage to the drum. The spinning operation will resume once the load has been evenly distributed.