



TDF1100 QUICK USER GUIDE

LAUNDRY COMES OUT DAMP AFTER THE DRYING PROCESS



Hot laundry may feel more damp than it really is after the drying process.

The programme used might not be suitable for the type of laundry.

Check the care labels on the laundry items, select a suitable programme for the type of laundry and additionally, use the time programmes.

The surface of the lint filter might be clogged.

Wash the filter with warm water.

The heat exchanger might be clogged.

Wash the heat exchanger.

The dryer might be overloaded with laundry.

Do not overload the dryer.

The laundry might be insufficiently spun.


Select a higher spin speed on your washing machine.

There might be a layer of dirt on the humidity sensor.

Clean the humidity sensor.

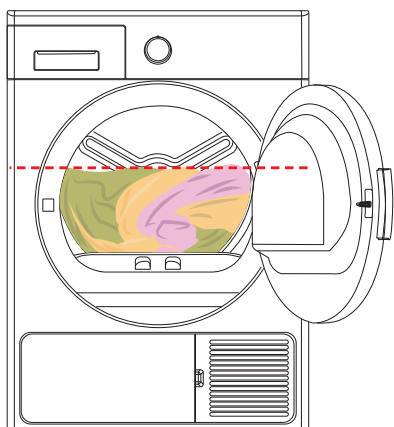
SUITABLE FOR DRYING IN A DRYER		NOT SUITABLE FOR DRYING IN A DRYER	
	Suitable for drying in a dryer	Not suitable for drying in a dryer	
	At high temperatures	Hang wet to dry	
	At medium temperatures	Hang to dry	
	At low temperatures	Spread to dry	

Follow the instructions on the labels of the laundry to be dried. Only dry items that have a statement/symbol that indicates "they can be dried in a dryer".

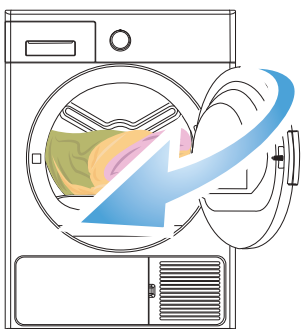
PROGRAMME SELECTION TABLE*	
PROGRAMME	LAUNDRY
Cotton Extra Cupboard Dry  Iron Dry	Cotton towels, bedsheets, pillowcases, bathrobes, etc.
Synthetics Cupboard Dry Iron Dry	Synthetics such as shirts, t-shirts, blouses, etc.
Time Programmes	To reach the required drying level at a low temperature, you can use the time programmes of 20 min. to 200 min. Regardless of the drying level, the programme stops at the desired time.
SPECIAL PROGRAMMES	
Delicate Anti crease Baby Care Jeans Duvet	Delicate: Shirts, blouses and silk garments. Anti crease: For Cotton and synthetic laundries. Baby Care: Delicate drying for infant clothes. Jeans: Jean clothes. Duvet: This programme is used to dry duvet.
Rapid Programmes** Express 34° Shirts 20°	Express 34°: 1kg of synthetics shirts spun at a high speed in the washing machine are dried in 34 minutes. Shirts 20°: 2 to 3 shirts are ready for to be ironed in 20 minutes.

* Please check the Programme Selection and Consumption Table in the instruction manual.

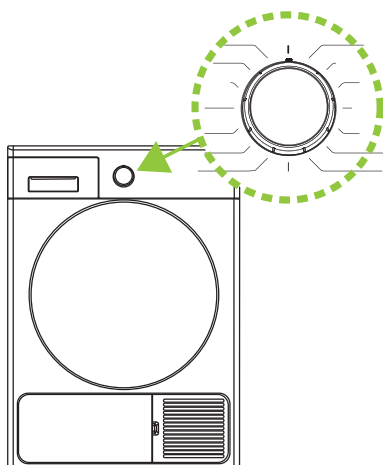
** The duration for rapid programmes are only valid for clothes which are spun at 1200rpm.



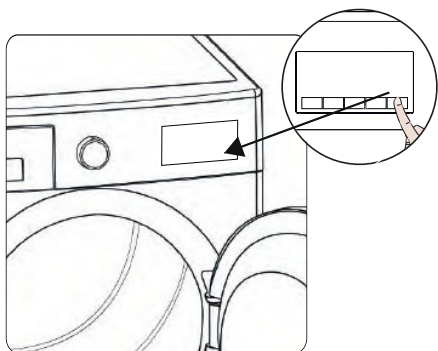
It is not recommended to load the dryer with more laundry than the amount shown in the figure. When overloaded, the drying performance of the dryer will decrease and the dryer and laundry might be damaged.



1. Separate your clothes according to their types, place into the machine and close the door.

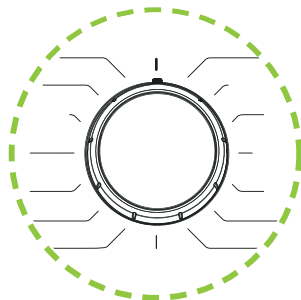


2. Select the suitable programme for your laundry by rotating the adjustment knob.



3. Run the programme by pushing Start/Pause button.

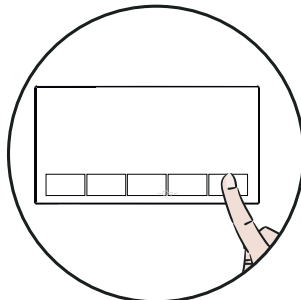
PROGRAMME SELECTION KNOB



Use the programme selection knob to select the desired drying programme.

Note: Please read instruction manual for detailed information.

ELECTRONIC ADDITIONAL FUNCTIONS



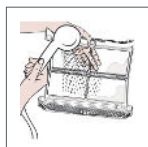
You can select additional functions for drying.

You can run the programme by pushing the Start/Pause button.

CLEANING AND CARE

TO CLEAN THE LINT FILTER

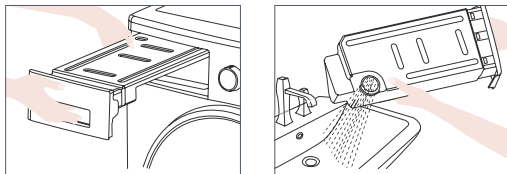
1. Open the loading door.
2. Pull up the lint filters to remove it.
3. Open the outer filter.
4. Clean the outer filter by hand or using a soft cloth.
5. Open the inner filter.
6. Clean the inner filter by hand or using a soft cloth.
7. Close the filters and fit the hooks.
8. Place inner filter inside of outer filter.
9. Push the filters into place.



After the dryer has been used for a certain period of time, if you see a layer that blocks the filter, you should remove it by cleaning the filter with warm water. Dry the filter thoroughly before reinstalling it.

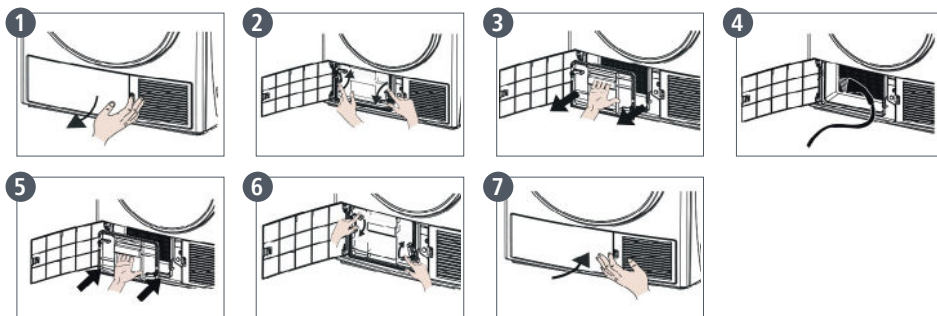
After the dryer has been used for a certain period of time, if you see a layer that block the filter, you should remove it by cleaning the filter with warm water. Dry the filter thoroughly before reinstalling it.

EMPTYING THE WATER TANK - AFTER EACH USE



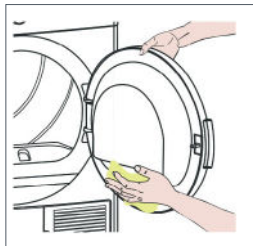
1. Pull the drawer cover and carefully take out the tank
2. Empty the water in the tank
3. If there is lint accumulated on the discharge cap in the tank, clean it with water
4. Refit the water tank

CLEANING THE HEAT EXCHANGER - AFTER EVERY 30 USES OR ONCE A MONTH



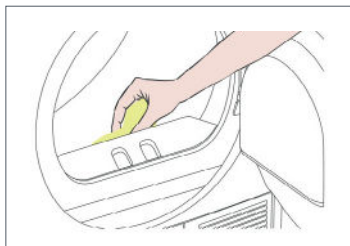
1. Open the kick plate cover.
2. Unlock the exchanger cover by turning in the direction shown with the arrows.
3. Take out the exchanger cover.
4. Clean the front surface of the exchanger.
5. Fit the exchanger cover.
6. Lock the exchanger cover by turning in the direction shown with arrows.
7. Close the kick plate cover.

CLEANING THE INNER SURFACE OF THE LOADING DOOR - AFTER EACH USE



Open the loading door of the dryer and clean all of the inner surfaces and the gasket with a soft, damp cloth.

CLEANING THE HUMIDITY SENSOR - 4 TIMES A YEAR



1. Open the loading door of the machine.
2. If the machine is still hot due to the drying process, wait for it to cool down.
3. Using a soft cloth soaked in vinegar, wipe the metal surfaces of the sensor and dry them.

INFORMATION, WARNINGS AND ECONOMIC USE

Your dryer is fitted with systems that continuously perform checks during the drying process to take the necessary measures and warn you in case of any malfunction.

- › Do not block the ventilation grills found on the plinth of the tumble dryer.
- › When the laundry is being washed, the spin speed should be at the highest level possible. This will shorten the drying time and reduce energy consumption.
- › Cleaning the lint filter periodically after each use enables the appliance to work efficiently and dry within a suitable time frame.
- › Your product can reach high levels of outer surface temperatures during the cycle.
- › Select the most suitable programme for preventing over-drying and possible creasing of your laundry.
- › If you do not take out the laundry after the programme has ended, the 1-hour Anti Crease phase will automatically be activated. This programme rotates the drum at regular intervals to prevent creases.
- › When drying one piece of laundry or a small amount of clothes, the humidity sensor may not detect the correct humidity level. Please use the timed drying programmes in this instance.
- › Do not load your machine with over wet clothes.
- › To install the dryer on-top of a washing machine, a Caple stacking kit must be used. This must be installed by a qualified fitter. See manual for further details.
- › Please make sure that your water tank is empty before each drying use.
- › You can hear a continuous fan sound during the drying process.
- › Condensed water is pumped into the water tank periodically during the drying process, which you may be able to hear.
- › You may hear a clatter sound caused by the zippers, clasps and buttons of your clothes.
- › In order to prevent a damp laundry problem, please dry your big [like duvets etc.] and small sizes of laundry separately.
- › During the drying process, you may hear some mechanical noises resulting from the compressor and pump running at the same time. This noise does not affect the performance of the product.
- › The coolant in the heat pump system is eco-friendly and flammable. For this reason, the product must be used in an area where there is ventilation and no open flame sources to avoid the risk of leaks.
- › If the clothes are not dried even if the programme duration is very long, contact Caple Service.
- › Do not forget to read the user manual for detailed descriptions and warnings.

