



Integrated Washer Dryer Instruction Manual

WDI3310



Contact Caple on 0117 938 7420 for spare parts or www.caple.co.uk

CONTENTS

Warnings	3
Environmental Protection	13
Warranty	13
Technical Specification	14
Overview of Washer Dryer	15
Installation	16
Installation Details	21
Quick User Guide	32
Detergent Drawer	35
Control Panel	37
Using Your Washing Machine	38
Operation	42
Programme Table	50
Table Of Programmes	54
Cleaning And Maintenance	56
Troubleshooting	60
Caple Contact Details	64

Keep these instructions for use with the appliance. If the appliance should be sold or passed on to others, make sure that the instructions are passed on with it. We thank you for taking note of these suggestions before installing and using the appliance. They have been written for your personal safety and the safety of others.



CAUTION: HOT SURFACE



CAUTION: RISK OF FIRE

WARNINGS

- This appliance is intended to be used in household and similar applications such as:
 - › Staff kitchen areas in shops, offices and other working environments.
 - › Farm Houses.
 - › By clients in hotels, motels and other residential type environments.
 - › Bed and breakfast type environments.
- Do not install your machine on a carpet or a surface that would prevent the ventilation of its base.
- Call the Caple service centre for a replacement if the power cord malfunctions.
- Use only the new water inlet hose that is provided with your machine when connecting to water supply. Never use old, used or damaged water inlet hoses.

- Your machine is designed for use in a domestic environment. The warranty will be invalid if you use it for commercial purposes.
- This appliance is not intended for use by persons [including children] with reduced physical, sensory or mental capabilities, or lack of experience and knowledge, unless they have been given supervision or instruction concerning use of the appliance by a person responsible for their safety.
- This appliance can be used by children aged from 8 years and above and persons with reduced physical, sensory or mental capabilities or lack of experience and knowledge if they have been given supervision or instruction concerning use of the appliance in a safe way and understand the hazards involved.
- Children shall not play with the appliance.
- Cleaning and user maintenance shall not be made by children without supervision. Children of less than 3 years should be kept away unless continuously supervised.
- Keep the packing materials from your machine away from children to avoid hazards.
- Keep pets away from your machine.
- It could be possible for a child or pet to gain access to the washer dryer through the porthole door. Therefore, please check the drum before using the appliance.
- Glass door may be very hot during the operation.

Keep kids and pets far away from the machine during the operation.

- DO NOT use the washer dryer if you suspect that it is damaged in any way. Under no circumstances should you attempt to repair the appliance yourself. Repairs carried out by inexperienced persons may cause serious injury.
- Consult your local appointed service engineer and insist on genuine spare parts.
- The washer dryer should be serviced by an appointed service organisation and only genuine parts used.
- It is recommended that the washer dryer be serviced annually by a person competent to service tumble dryers.
- It is dangerous to alter or modify the product in any way other than fitting authorised accessories.
- The new hose-sets supplied with the appliance are to be used and that old hose-sets should not be reused.
- DO NOT allow fluff to accumulate around the washer dryer. Risk of fire.
- DO NOT use the product if the fluff filter is not in position or is damaged; fluff could be ignited.
- Lint and fluff must not be allowed to collect on the floor around the outside of the machine.
- It is important to clean the lint filter after each drying cycle or the restrictions to airflow will extend drying times and could cause the safety cut-out to trip.

- It is important to clean fluff from the window of the dryer and around the door seal after each drying cycle. Failure to do so could result in water leaking.

INSTALLATION WARNINGS

- The washer dryer must be installed by a Registered Installer.
- Do not install the product in a low temperature room or in a room where there is a risk of frost occurring. At temperatures around freezing point the product may not be able to operate properly: there is a risk of damage if the water is allowed to freeze in the hydraulic circuit [valves, hoses, pumps].
- The appliance shall not be installed in bath room or very wet rooms as well as in the rooms with explosive or caustic gases.
- The appliance shall not be installed at a humid place.
- Never install the washer dryer near curtains.
- The appliance must not be installed behind a lockable door, a sliding door or a door with a hinge on the opposite side to that of the tumble dryer.
- Please note it is not recommended that the washer dryer is placed directly next to ovens or cookers as the performance of the dryer may be affected.
- Do not stack the washer dryer on top of other appliances.

- Remove all packages and transport bolts before using the appliance. Otherwise, serious damage may result.

VENTILATION WARNING

- Install the rear of the appliance close to a wall or vertical surface.
- There should be a gap of at least 12mm between the machine and any obstructions. The inlet and outlet air should be kept clear of obstruction.
- DO NOT block the air inlets at the front and back of your washer dryer.
- DO NOT block the air inlets at the base and side of your washer dryer.
- Make sure carpets or rugs do not obstruct the base or any ventilation openings.
- Prevent items from falling or collecting behind the washer dryer as they may obstruct the air inlet and outlet.
- Adequate ventilation must be provided to avoid back flow of gases into the room from appliances burning other fuels, including open fires.
- Exhaust air must not be discharged into a flue which is used for exhausting fumes from appliances burning gas or other fuel.
- The rear of the washer dryer gets quite hot during use.
- Position the appliance so that the back is not accessible while in operation, but ensure that the sides have a space available to allow airflow.

LAUNDRY WARNINGS

- Before using for the first, the product shall be calibrated.
- Before washing the clothes at first time, the product shall be operated in one round of the whole procedures without the clothes inside.
- Always refer to the laundry care labels for directions on suitability for washing and drying.
- Fabric softeners, or similar products should be used as specified by the fabric softener instructions.
- Make sure that all pockets are emptied. Sharp and rigid items such as coin, brooch, nail, screw or stone etc. may cause serious damages to this machine.
- Remove all objects from pockets such as lighters and matches.
- DO NOT exceed the recommended maximum load.
- DO NOT dry articles in the appliance if anything other than a water solution has been used in the cleaning process.
- DO NOT dry unwashed items in the washer dryer.
- DO NOT attempt to dry dripping wet articles.
- Clothes should be spin dried or thoroughly wrung before they are dried.
- Under no circumstances should anything other than the recommended articles be placed in the washer dryer.
- It is forbidden to wash carpets.
- Glass fibre curtains should NEVER be put in this machine.
- Skin irritation may occur if other garments are contaminated with glass fibres.
- Foam rubber materials can, under certain circumstances, when heated become ignited by spontaneous combustion.
- Items such as foam rubber [latex foam], shower caps, waterproof textiles, rubber backed articles and clothes or pillows fitted with foam rubber pads MUST NOT be dried in the washer dryer.
- Items that have been soiled with substances such as cooking oil, acetone, alcohol, petrol, kerosene, spot removers, turpentine, waxes and wax removers should be washed in hot water with an extra amount of detergent before being dried. This will reduce, but not eliminate, the hazard.
- The washer dryer is not to be used if industrial chemicals have been used for cleaning.
- The drum inside may be very hot. Always allow the washer dryer to complete the cool down period before removing the laundry.
- The final part of the drying cycle occurs without heat [cool down cycle] to ensure that the items are left at a temperature that ensures that the items will not be damaged.

- **WARNING:** Never stop the machine before the end of the drying cycle unless all items are quickly removed and spread out so that the heat is dissipated.
- Do not lean on the door when loading the machine or use the door to lift or move the machine.
- Do not climb up and sit on top cover of the machine.
- Please do not close the door with excessive forces. If it is found difficult to close the door, please check if the clothes are put in or distributed well.
- Please check whether the water inside the drum has been drained before opening its door. Please do not open the door if there is any water visible.
- Be careful of burning when the product drains hot washing water.
- After the programme is completed, please wait for two minutes to open the door [Some models].
- Never refill the water by hand during washing.
- The machine whose lid can be opened during water extraction, that it takes 15s or more for complete stop of water extracting chamber tub.

ELECTRICAL WARNINGS

- Do not plug the machine in and switch it on at the mains until the installation is completed.
- The technical details [supply voltage and power input] are indicated on the product rating plate.
- Any electrical work required to install the appliance should be carried out by a qualified person.
- The appliance must not be supplied through an external switching device, such as a timer, or connected to a circuit that is regularly switched on and off by a utility.
- **DO NOT** use a two-way adaptor, or extension lead. The dryer must be connected to its own socket.
- This appliance must be Earthed.
- The socket outlet and the plug on the appliance must be of the same type.
- Do not touch the appliance when hands or feet are damp or wet.
- We recommend that the appliance is unplugged each time after use. It should always be disconnected from the electricity supply for long periods [i.e. weekends, if it is to be left unattended for holidays etc.].
- The special mains cable and plug assembly must only be replaced with a genuine part available from the manufacturer or service agent in order to avoid a hazard.

- Make sure that the electrical system is earthed, complies with all applicable law and that the [electricity] socket is compatible with the plug of the appliance. Otherwise, seek qualified professional assistance.
- The plug should be accessible for disconnection after the appliance has been installed.
- Always remove the plug before cleaning the appliance.

Explanation of the symbols:

⚠ WARNING: This combination of symbol and signal word indicates a potentially dangerous situation which may result in death or serious injuries unless it's avoided.

⚠ CAUTION: This combination of symbol and signal word indicates a potentially dangerous situation which may result in slight or minor injuries or damage to property and the environment.



ENVIRONMENTAL PROTECTION

Waste electrical products should not be disposed of with household waste. Please recycle where facilities exist. Check with your Local Authority or retailer for recycling advice. This appliance is marked according to the European Directive on Waste Electrical and Electronic Equipment [WEEE].

By ensuring this product is disposed of correctly, you will help prevent potential negative consequences for the environment and human health, which could otherwise be caused by inappropriate waste handling of this product. The symbol on the product indicates that this product may not be treated as household waste. Instead it shall be handed over to the applicable collection point for the recycling of electrical and electronic equipment. Disposal must be carried out in accordance with local environmental regulations for waste disposal.

For more detailed information about treatment, recovery and recycling of this product, please contact your local council, your household waste disposal service or the retailer where you purchased the product.

CE DECLARATIONS OF CONFORMITY **CE**

This appliance has been manufactured to the strictest standards and complies with all applicable legislation, Low Voltage Directive [LVD] and Electromagnetic Compatibility [EMC].

UKCA DECLARATIONS OF CONFORMITY **UKCA**

This appliance has been manufactured to the strictest standards and complies with all applicable legislation.

TECHNICAL FICHE

This appliance conforms to all current and applicable energy regulations. To view the Technical Fiche that supports the energy labelling data, please visit the product page on our website www.caple.co.uk

WARRANTY

Your new appliance is covered by warranty. The warranty card is enclosed - if it is missing, you must provide the following information to your retailer in order to receive a replacement: date of purchase, model and serial number [placed on the inside of the appliance storage drawer]. Registration can also be completed online by visiting www.caple.co.uk.

Ensure you keep your warranty card safe, you may need to show it to Caple Service together with proof of purchase.

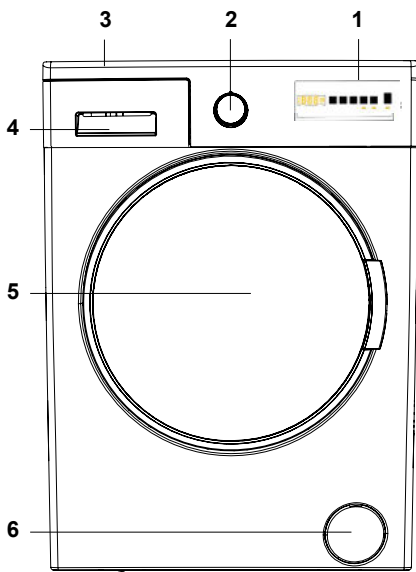
If you fail to show your warranty card you will incur all repair charges.

Spare parts are only available from Caple Service and spare parts authorised centres.

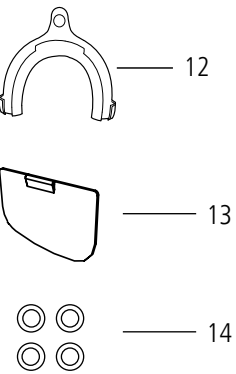
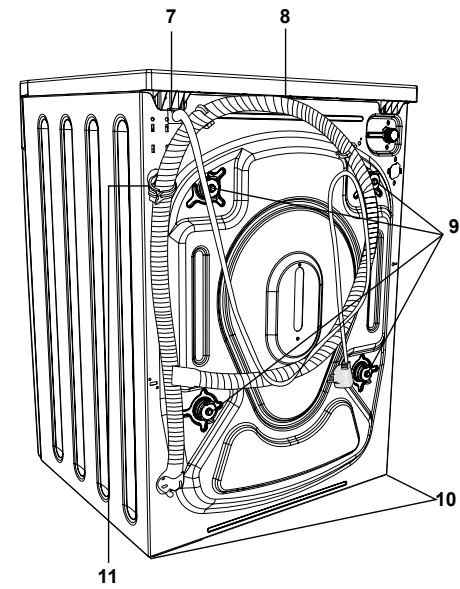
TECHNICAL SPECIFICATION

Operating voltage / frequency [V/Hz]	[220-240] V~/50Hz
Total current [A]	10
Water pressure [Mpa]	Maximum: 1 Mpa Minimum : 0. 1 Mpa
Total power [W] Maximum washing capacity [dry laundry] [kg]	1850 8.0
*Maximum drying capacity[kg] Spinning revolution [rev /min]	5.0 1400
Programme number	15
Dimensions [mm] Height Width Depth	818 598 545
You should not put dry laundry in your machine for drying.	

OVERVIEW OF WASHER DRYER

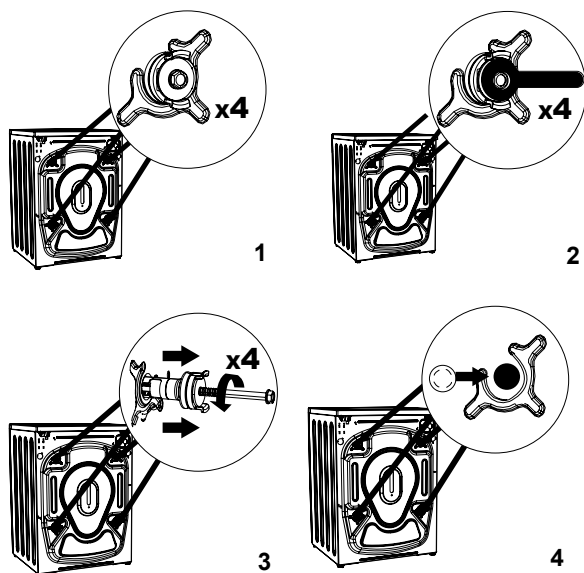


- 1. Electronic Display
- 2. Programme Dial
- 3. Upper Tray
- 4. Detergent Drawer
- 5. Drum
- 6. Pump Filter
[behind plinth when installed]
- 7. Power Cord
- 8. Drain Hose
- 9. Transport Screws
- 10. Adjustable Feet
- 11. Plastic Drain Hose Holder: [Do not remove the holder; the operation of the machine will be affected].
- 12. Drain Hose Support
- 13. Fluid detergent level plate
- 14. Blanking caps for transit bolts



INSTALLATION

REMOVING THE TRANSPORT BOLTS



1. Before operating the washing machine, remove the 4 transit bolts and rubber spacers from the rear of the machine. If the bolts are not removed, they may cause heavy vibration, noise and malfunction of the machine and void the warranty.
2. Loosen the transit bolts by turning them anticlockwise with an appropriate spanner.
3. Remove the transit bolts with a straight pull.
4. Fit the plastic blanking caps supplied in the accessories bag into the gaps left by the removal of the transit bolts. The transit bolts should be stored for future use.

NOTE:

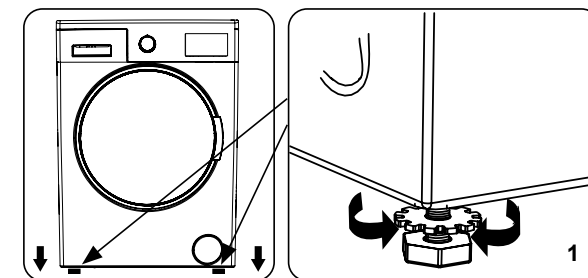
Remove the transit bolts before using the machine for the first time. Faults occurring due to the machine being operated with transit bolts fitted are out of the scope of the warranty.

During the removal of the bolts, spacer tubes fall inside the product. These can be removed by tilting the product forward and recovering them from the floor or inside the base of the machine.

ADJUSTING THE FEET /ADJUSTING ADJUSTABLE STAYS

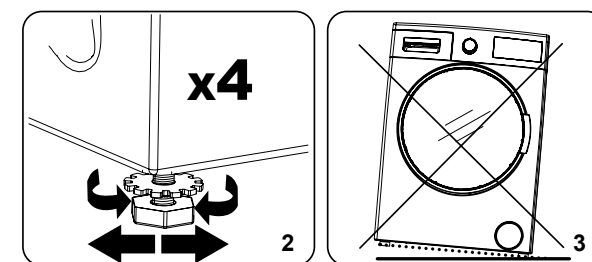
1. Do not install your machine on a surface [such as carpet] that would prevent ventilation at the base.

- › To ensure quiet and vibration-free operation of your machine, install it on a firm surface.
- › You can level your machine using the adjustable feet [using when not level can cause the furniture door to knock when in use]
- › Loosen the plastic locking nut.



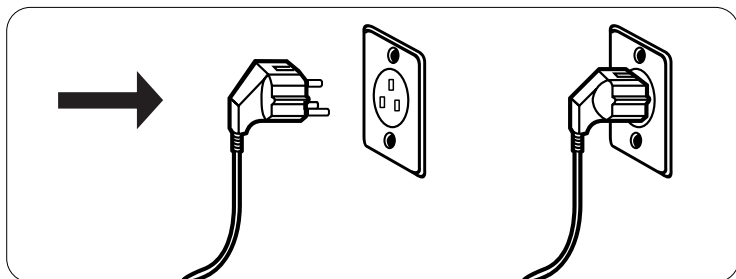
2. To increase the height of the machine, turn the feet clockwise. To decrease the height of the machine, turn the feet anticlockwise.

- › Once the machine is level, tighten the locking nuts by turning them clockwise.



3. Never insert cardboard, wood or other similar materials under the machine to level it.
- › When cleaning the ground on which the machine is located, take care not to disturb the level of the machine.

ELECTRICAL CONNECTION

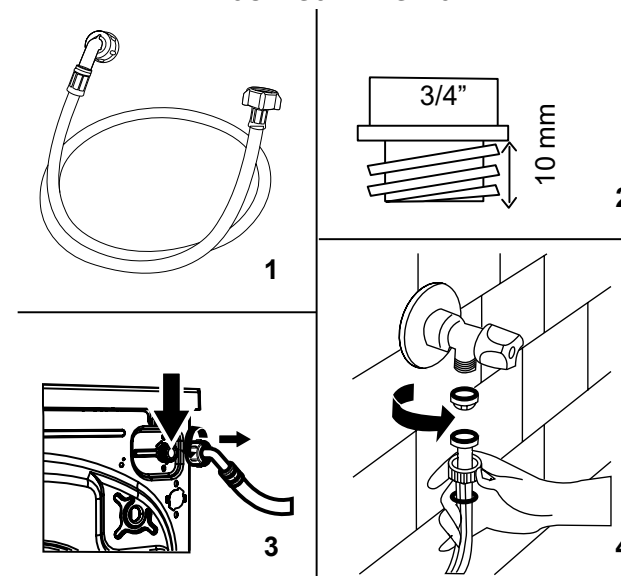


- › Your Washing Machine requires a 220 - 240V, 50 mains supply.
- › The mains cord of your washing machine is equipped with an earthed plug. This plug should always be inserted to an earthed socket of 10 amps.
- › If you do not have a suitable socket and fuse conforming with this, please ensure the work is carried out by a qualified electrician.
- › We do not take responsibility for damage that occurs due to the use of ungrounded equipment.

NOTE:

Operating your machine with low voltage will cause the life cycle of your machine to be reduced and its performance to be restricted.

WATER INLET HOSE CONNECTION

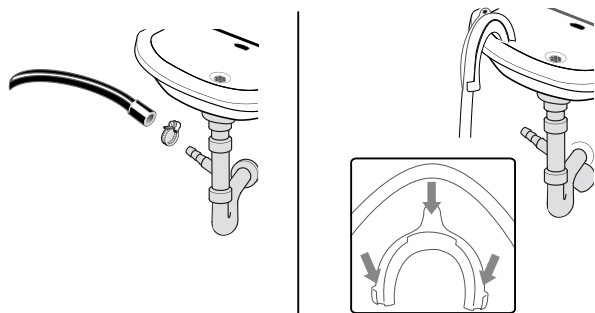


1. Your machine has a single water inlet connection [cold]. The white capped hose should be connected to cold water inlet.
 - › To prevent water leaks at the joints, either 1 or 2 nuts [depending on your machine's specifications] are supplied in the packaging with the hose. Fit these nuts to the end[s] of the water inlet hose that connect to the water supply.
2. Connect new water inlet hoses to a $\frac{3}{4}$ " threaded tap.
 - › Connect the white capped end of the water inlet hose to the white water inlet valve on the rear side of the machine.
 - › Tighten the plastic parts of the connections by hand. If in any doubt, consult a qualified plumber.
 - › Water flow with pressure of 0. 1-1 Mpa will allow your machine to operate at optimum efficiency [pressure of 0. 1 Mpa means that more than 8 litres of water per minute will flow through a fully opened tap].
3. Once you have made all of the connections, carefully turn the water supply on and check for leaks.
4. Ensure that the new water inlet hoses are not trapped, kinked, twisted, folded or crushed.

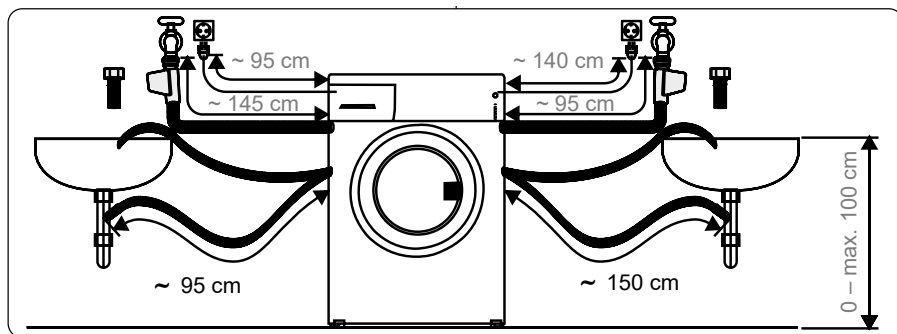
⚠ WARNING:

Must only be connected to your water supply using the supplied new fill hose. Old hoses must not be reused.

WATER DISCHARGE CONNECTION

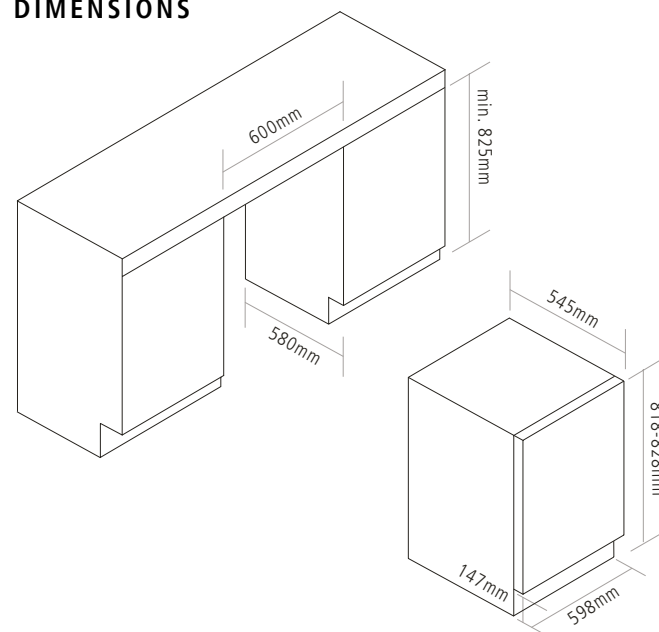


- › Connect the water drain hose to a standpipe or to the outlet elbow of a household sink, using additional equipment.
- › Never attempt to extend the water drain hose.
- › Do not put the water drain hose from your machine into a container, bucket or bathtub.
- › Make sure that the water drain hose is not bent, buckled, crushed or extended.
- › The water drain hose must be installed at a maximum height of 100 cm from the ground.

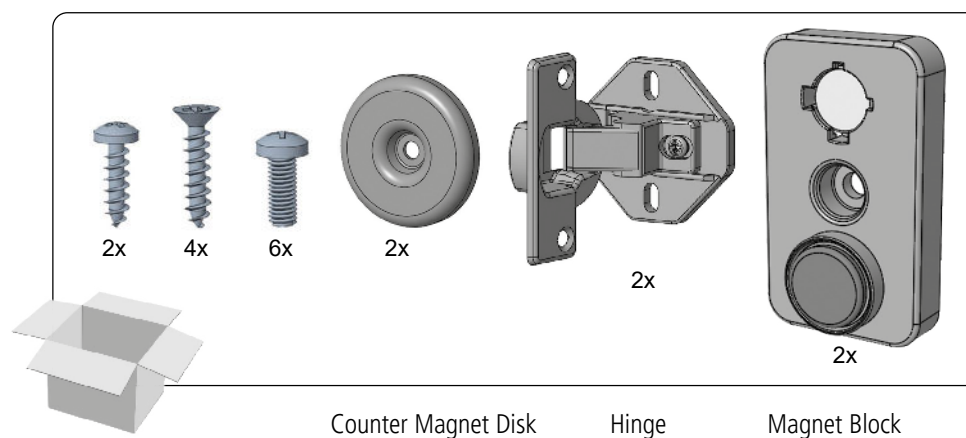


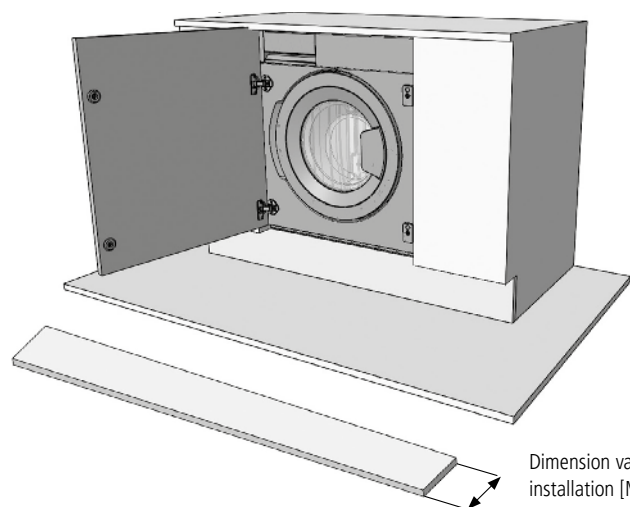
INSTALLATION DETAILS

DIMENSIONS



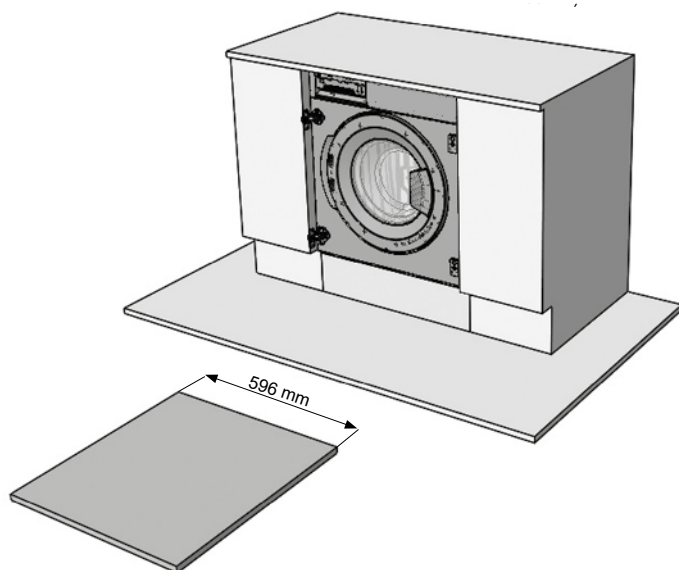
INSTALLATION ACCESSORIES



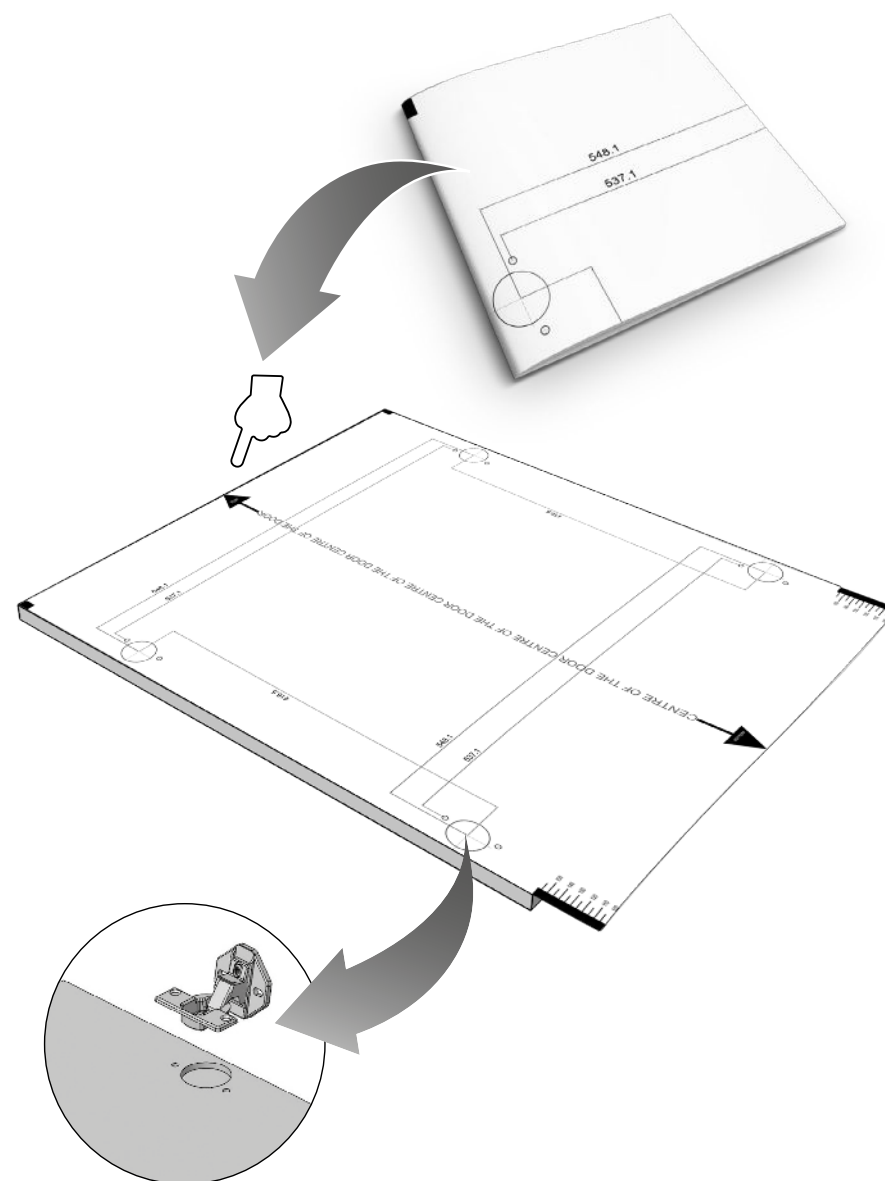


[*] ensure the plinth can be removed by the user to clean the filter
Measure and test fit the plinth*

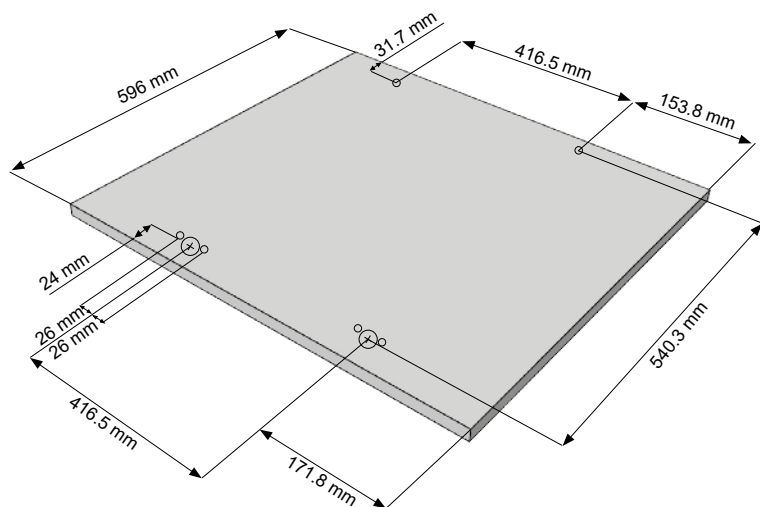
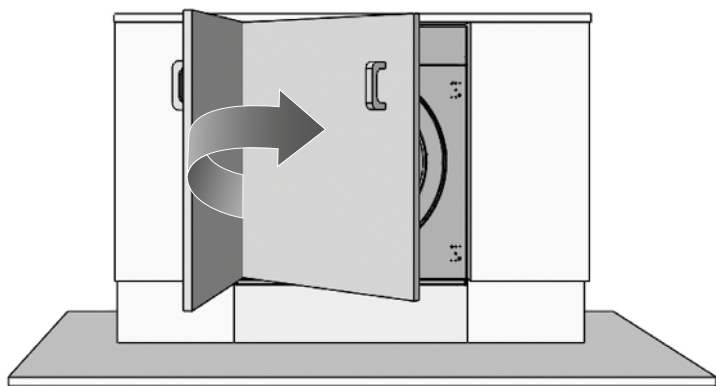
Dimension varies based on installation [Max. 150mm]



Line the door template up and use it to drill the hinge locations.

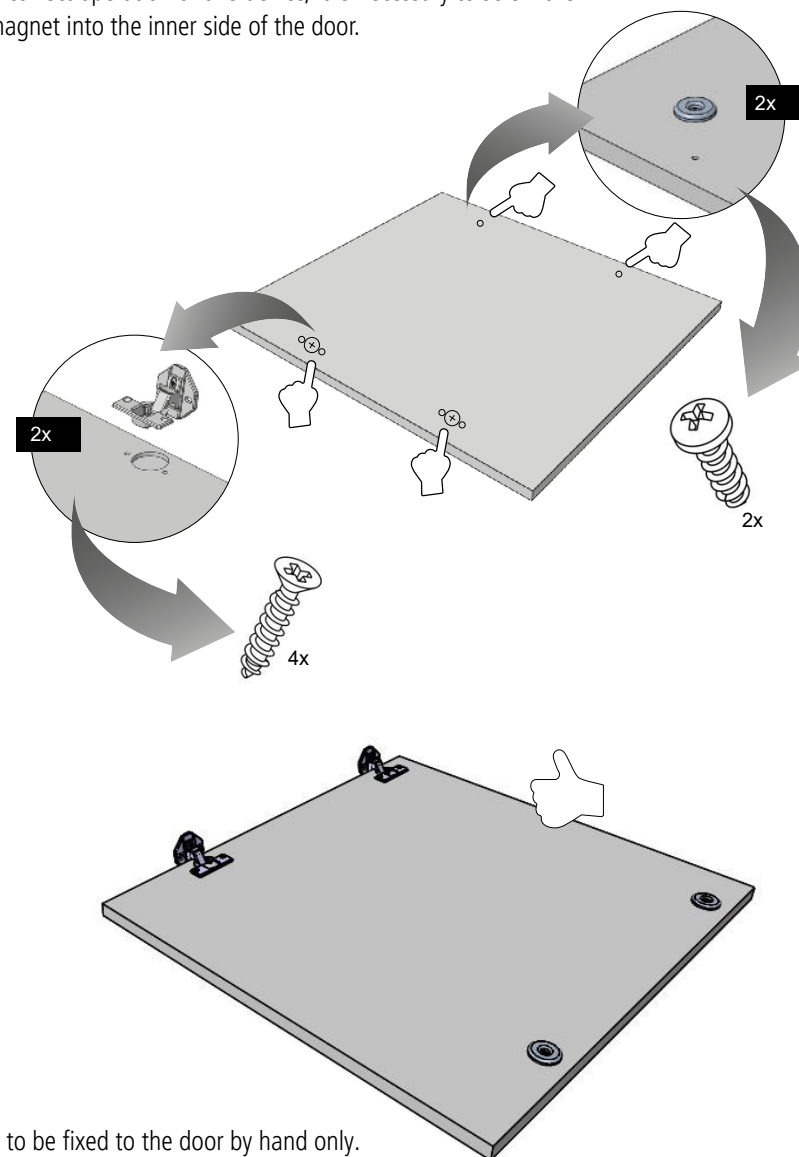


IF THE CABINET DOOR OPENS TO THE LEFT



The appliance is designed with magnetic closure of the door.

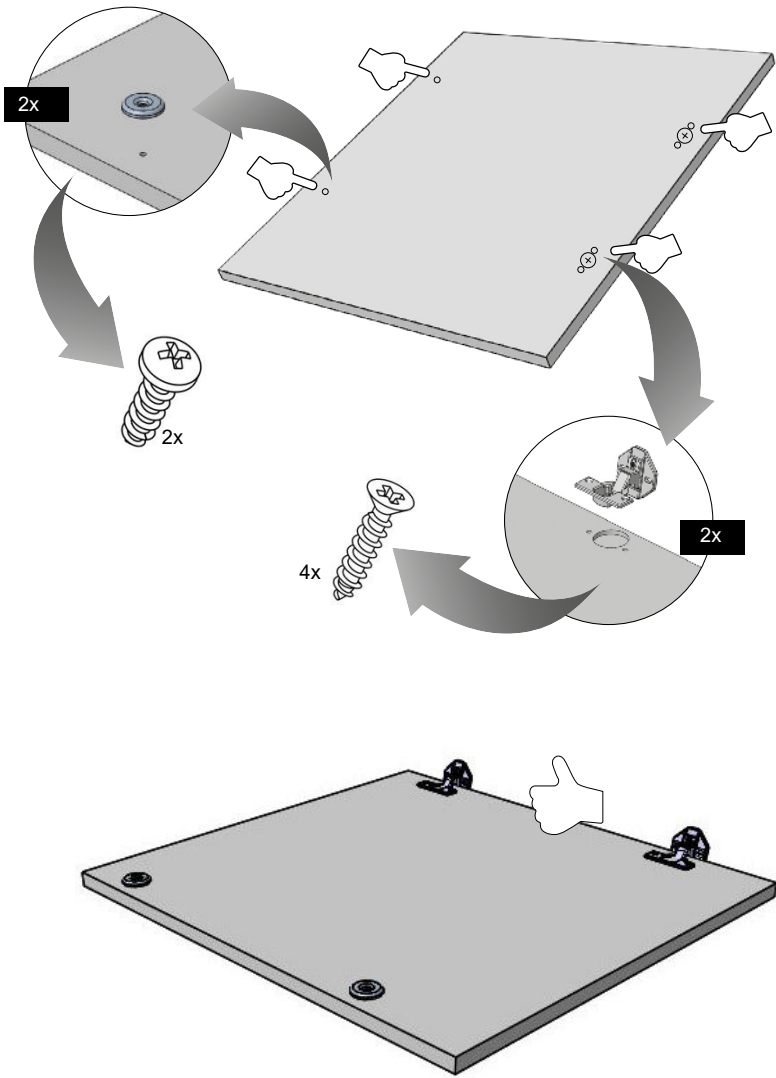
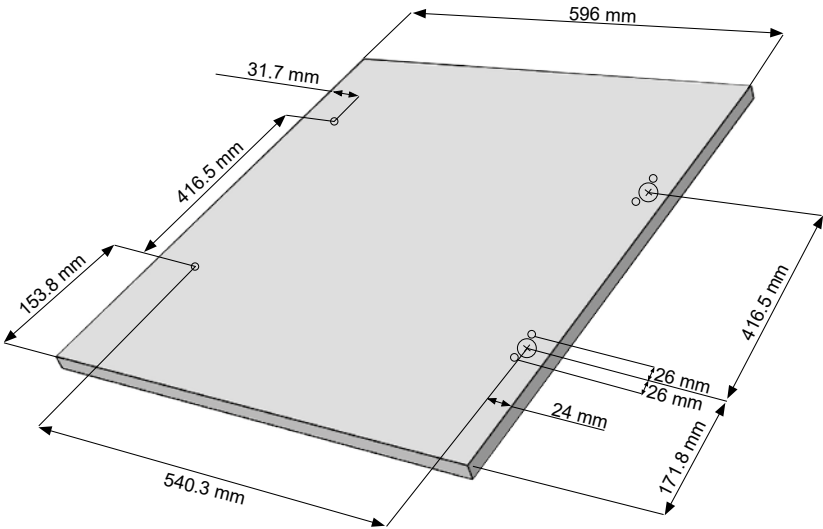
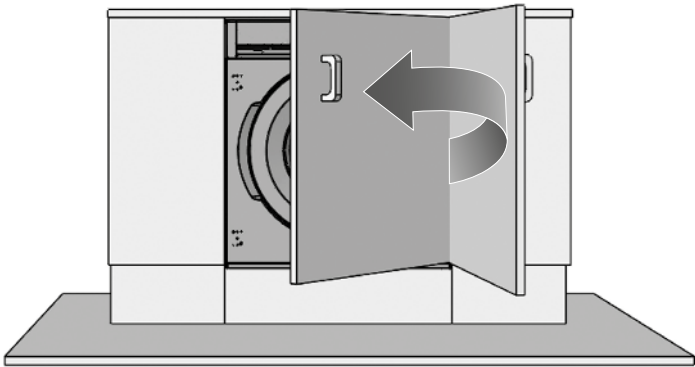
To enable correct operation of this device, it is necessary to screw the counter-magnet into the inner side of the door.



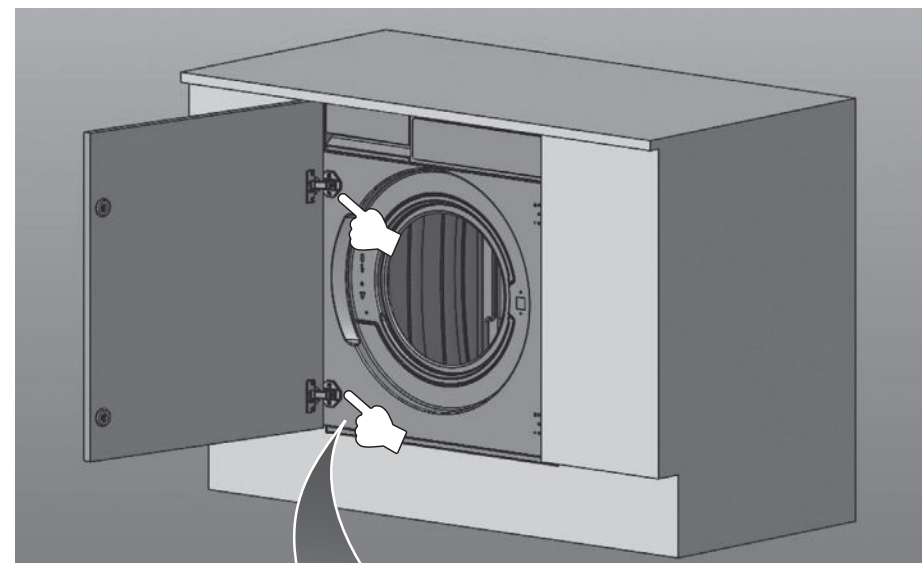
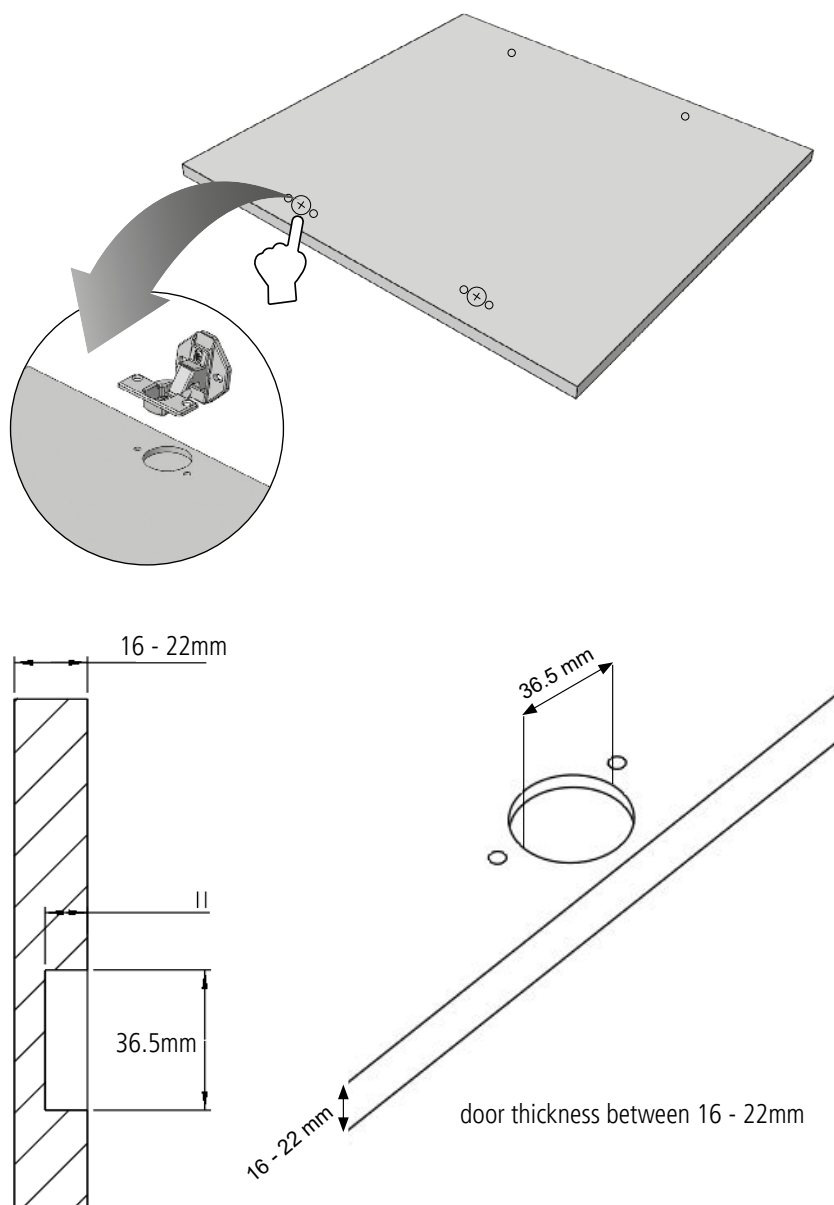
NOTE

Hinges are to be fixed to the door by hand only. Do not use a power tool/electric drill as this will prevent the possibly of damaging the threads.

IF THE CABINET DOOR OPENS TO THE RIGHT



Insert the hinges into the furniture door and use the two wood screws to fix in place.

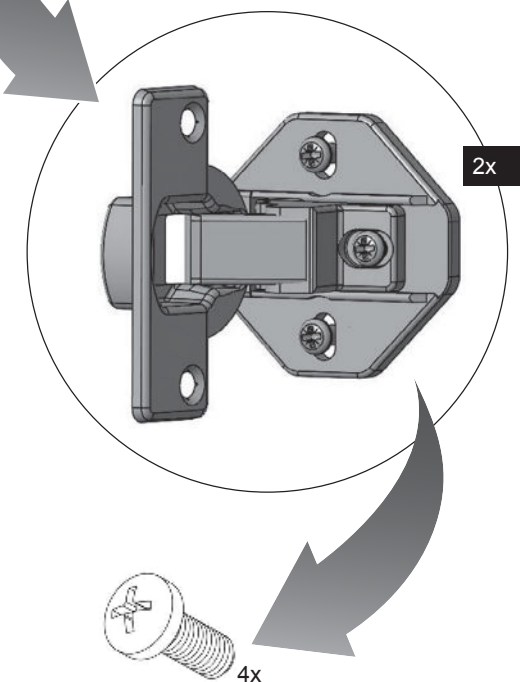


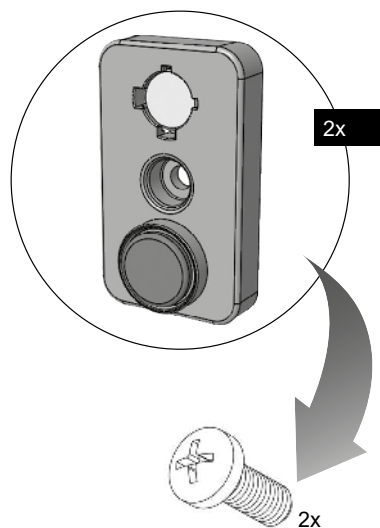
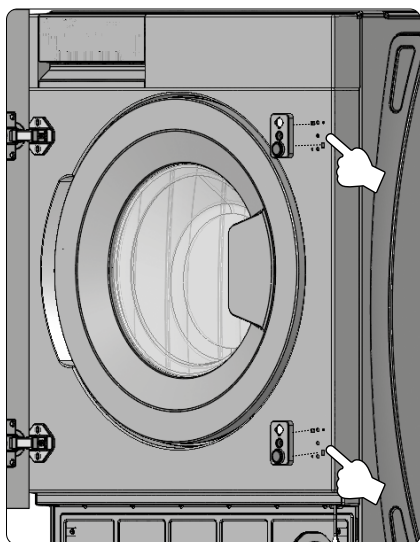
Mount the door on the appliance using the hinges and 2 machine thread screws [2 per hinge, 4 in total]

NOTE:

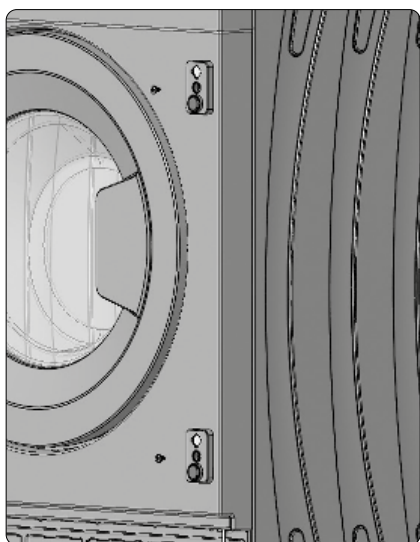
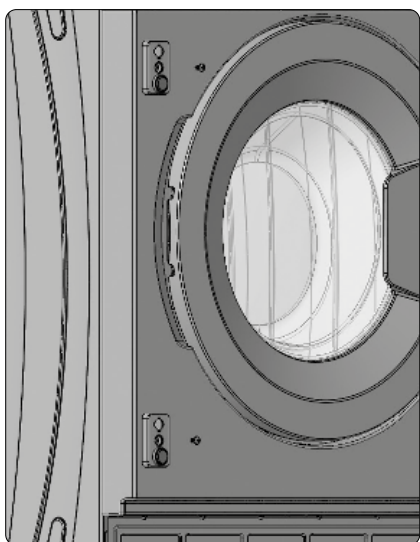
It is recommended to use a powered screwdriver.

The furniture door should not exceed 8kg.

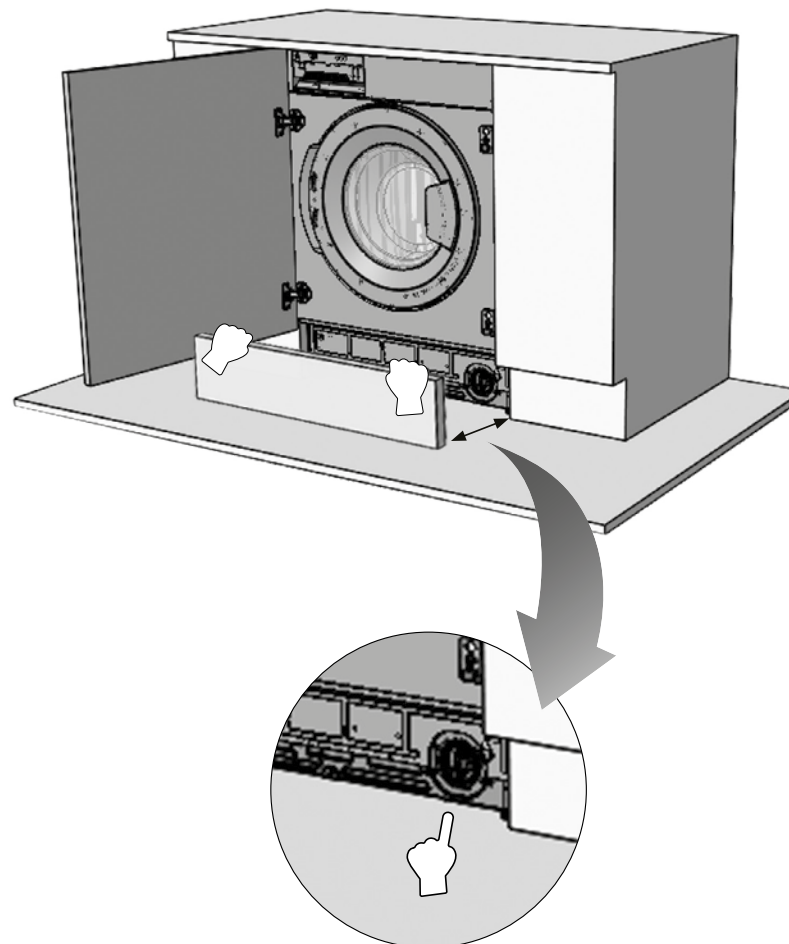




Mount the two door magnet blocks, using the final 2 machine thread screws
[1 per magnet block]




Finally fit the kitchen plinth ensuring that you allow easy access to the filter to allow the user to clean the filter.



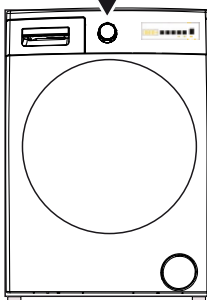
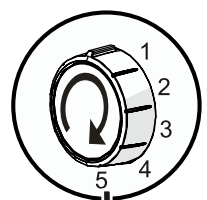
QUICK USER GUIDE

IMPORTANT:

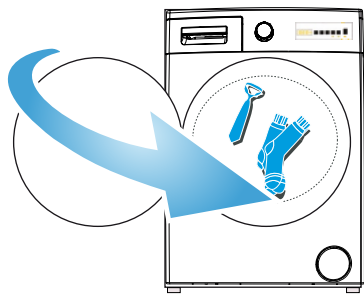
- › Only “machine dryable” labelled  clothes can be dried in your machine.
- › Do not dry woollen, silk and sensitive clothes in your machine.
- › If you continue to operate your washing machine whilst overloaded, washing and drying performances will be affected. Additionally, your washing machine can be damaged and you may see your clothes turn yellow after drying programmes.
- › Dry your white and coloured clothes separately.
- › Select the most appropriate programme for the material and the amount of your laundry before starting, drying, washing or washing/drying process.

 **PLEASE CHECK INSTRUCTION MANUAL FOR DETAILED INFORMATION.**

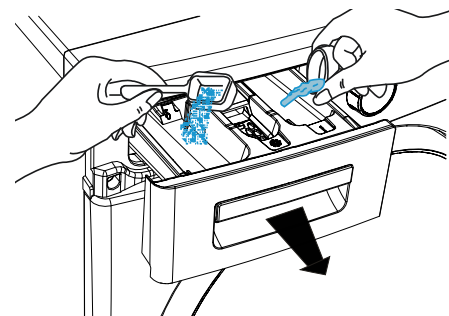
1. Select the programme and additional functions.



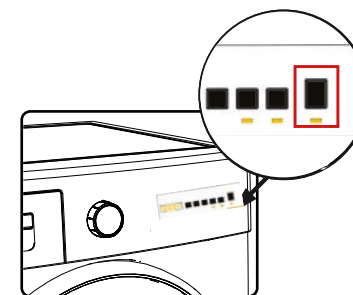
2. Separate the laundry by type and colour. Place the laundry into your machine.



3. Add softener and detergent.

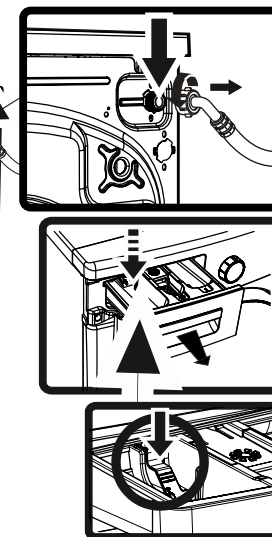
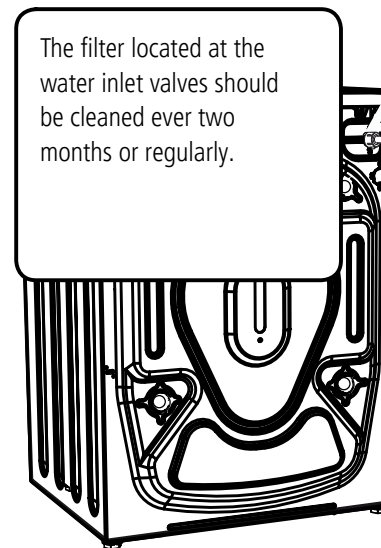


4. Start your machine by pressing the Start/Pause button.

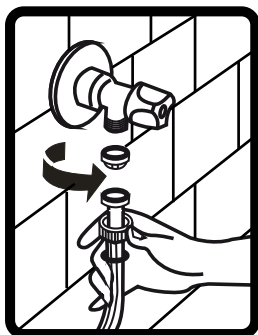


CARE AND CLEANING INSTRUCTIONS

The filter located at the water inlet valves should be cleaned ever two months or regularly.



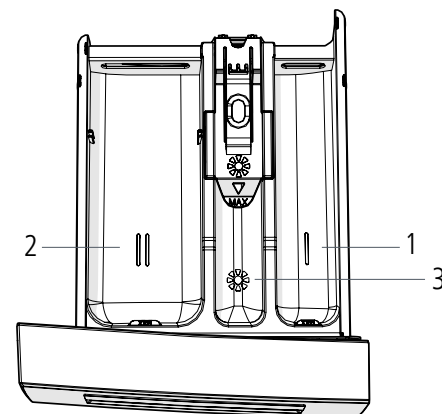
The detergent drawer should be cleaned every two months.



The Water inlet hose filter should be cleaned every two months.



DETERGENT DRAWER

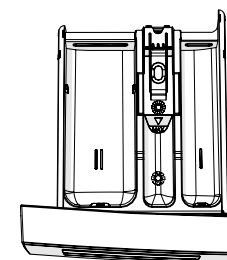
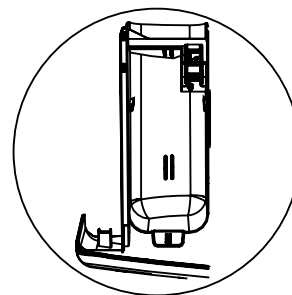


[*] Specifications may vary depending on the machine purchased.

Pre-Wash Detergent Compartment:

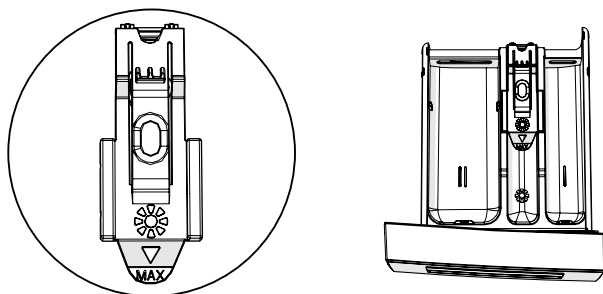
1. This compartment should be used only when the pre-wash feature is selected. We recommend that the pre-wash feature is used only for very dirty laundry.
2. Main Wash Detergent Compartment: This is for liquid or powder detergents or limescale remover.
3. Softener Compartment: For softeners, conditioners or starch. Follow the instructions on the packaging. If softeners leave residue after use, try diluting them or using a liquid softener.

SECTIONS MAIN WASH DETERGENT COMPARTMENT:



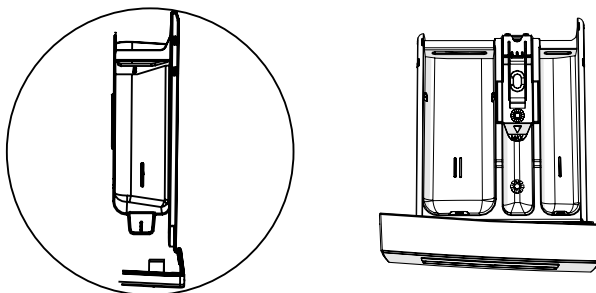
This compartment is for liquid or powder detergents or limescale remover. The fluid detergent level plate will be supplied inside your machine. [*]

FABRIC CONDITIONER, STARCH, DETERGENT COMPARTMENT:



This compartment is for liquid or powder detergents or limescale remover. The fluid detergent level plate will be supplied inside your machine. [*]

PRE-WASH DETERGENT COMPARTMENT:

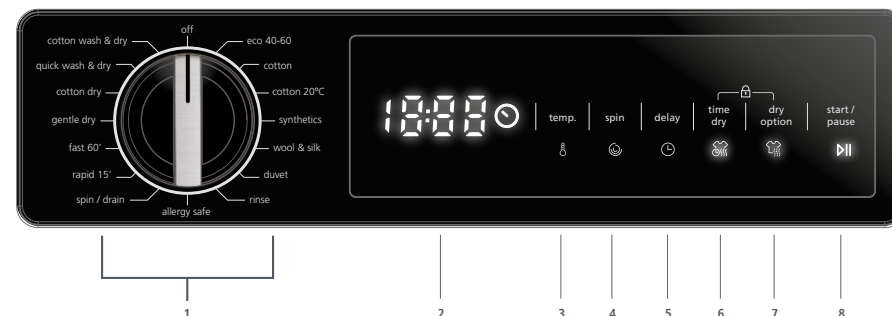


This compartment should be used only when the pre-wash feature is selected. We recommend that the pre-wash feature is used only for very dirty laundry.

[*] Specifications may vary depending on the machine purchased.

CONTROL PANEL

PROGRAMME DIAL:



1. Programme Dial
2. Electronic Display
3. Water Temperature Adjustment Button
4. RPM Speed Adjustment Button
5. Delayed Start Button
6. Duration Drying Selection Button
7. Drying Option Selection Button
8. Start/Pause Button

- › To select the desired programme, turn the programme dial either clockwise or anti-clockwise until the marker on the programme dial points to the chosen programme.
- › Make sure that the programme dial is set exactly to the programme you want.

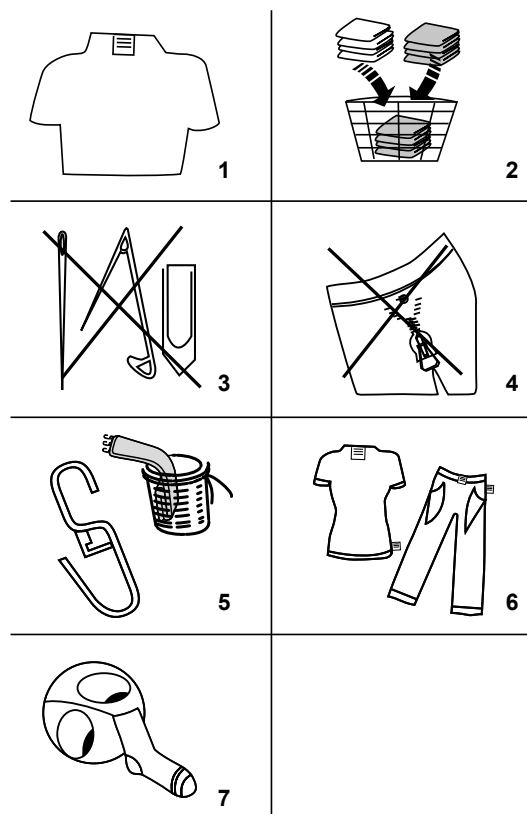
ELECTRONIC DISPLAY

The display panel shows the washing delay timer [if set], temperature selection, spin speed, any additional functions selected.

The display panel shows "End--" when the selected programme is complete and an audible tone will sound. The display panel also indicates if a fault has occurred with your machine.

USING YOUR WASHING MACHINE

PREPARING YOUR LAUNDRY


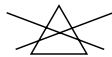
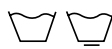
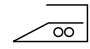
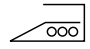
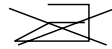

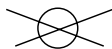
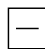


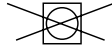





- Follow the instructions given in the care labels on the clothing.
 - › Separate your laundry according to type [cotton, synthetic, sensitive, wool etc.], washing temperature [cold, 30°, 40°, 60°, 90°] and the degree of dirtiness [slightly stained, stained, highly stained].
- Never wash coloured and white laundry together.
 - › Dark textiles may contain excess dye and should be washed separately.
- Ensure that there are no metallic materials on your laundry or in the pockets; if so, remove them.

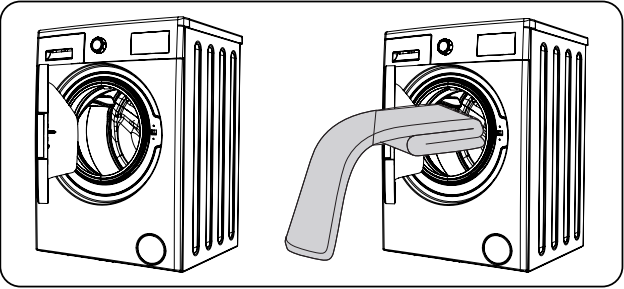
WARNING:

Any malfunctions which occur due to foreign materials damaging your machine are not covered by the warranty.

- Close zips and fasten any hooks and eyes.
- Remove the metallic or plastic hooks off curtains or place them in a washing net or bag.
- Turn garments inside out.
- Wash socks, handkerchiefs and other small items in a washing net.

 Can be bleached	 Do not bleach	 Normal washing
 Maximum ironing temperature 150°C	 Maximum ironing temperature 200°C	 Do not iron
 Can be dry cleaned	 No dry cleaning	 Dry flat
 Drip dry	 Hang to dry	 Do not tumble dry
 Dry cleaning in gas oil, pure alcohol and R113 is allowed	 Perchloroethylene R11, R13, Petroleum	 Perchlorinetyhlene R11, R113, Gas oil

PUTTING LAUNDRY IN THE MACHINE



- › Open the door of your machine.
- › Spread your laundry evenly in the machine.

NOTE:

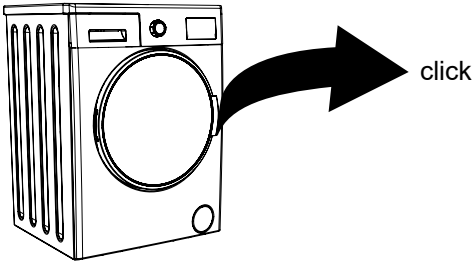
Take care not to exceed the maximum load of the drum as this will give poor wash results and cause creasing.

Refer to the washing programme tables for information on load capacities.

The following table shows approximate weights of typical laundry items:

LAUNDRY TYPE	WEIGHT
Towel	200
Linen	500
Bathrobe	1200
Quilt Cover	700
Pillow Cover	200
Underwear	100
Tablecloth	250

- › Load each item of laundry separately.
- › Check that no items of laundry are trapped between the rubber seal and the door.
- › Gently push the door until it clicks shut.



- › Make sure the door is fully closed, otherwise the programme will not start.

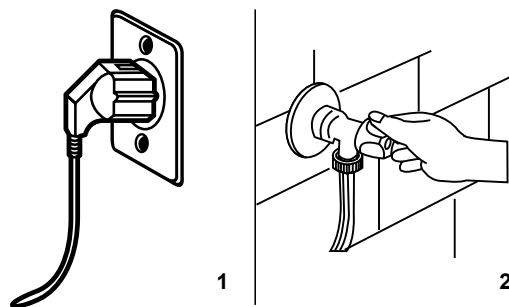
ADDING DETERGENT TO THE MACHINE

The amount of detergent you will need to put in your machine will depend on the following criteria:

- › If your clothes are only slightly soiled, do not pre-wash. Put a small amount of detergent [as specified by the manufacturer] into compartment II of the detergent drawer.
- › If your clothes are excessively soiled, select a programme with pre-wash and put ¼ of the detergent to be used into compartment I of the detergent drawer and the rest in compartment II.
- › Use detergents produced for automatic washing machines. Follow the manufacturer's instructions on the amount of detergent to use.
- › In areas of hard water, more detergent will be required.
- › The amount of the detergent required will increase with higher washing loads.
- › Put softener in the middle compartment of the detergent drawer. Do not exceed the MAX level.
- › Thick softeners may cause clogging of the drawer and should be diluted.
- › It is possible to use fluid detergents in all programmes without a pre-wash. To do this, slide the fluid detergent level plate [*] into the guides in compartment II of the detergent drawer. Use the lines on the plate as a guide to fill the drawer to the required level.

[*] Specifications may vary depending on the machine purchased.

OPERATION



1. Plug your machine in to the mains supply.
2. Turn on the water supply.
 - › Open the machine door.
 - › Evenly spread your laundry in the machine.
 - › Gently push the door until it clicks shut.

SELECTING A PROGRAMME

Use the programme table to select the most appropriate programme for your laundry.

HALF-LOAD DETECTION SYSTEM

Your machine features a half-load detection system.

If you put less than half the maximum load of laundry into your machine it will automatically set the half-load function, regardless of the programme you selected.

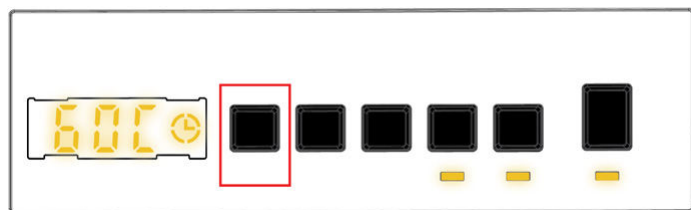
This means that the selected programme will take less time to complete and will use less water and energy.

[*] Model Dependant

ADDITIONAL FUNCTIONS

TEMPERATURE SELECTION

Use the washing water temperature adjustment button to alter the automatically programmed washing water temperature.



When you select a programme the maximum temperature for that programme is automatically selected. To adjust the temperature, press the water temperature adjustment button until the desired temperature is displayed on the digital display.

You can gradually decrease the washing water temperature between the maximum wash water temperature of the selected programme and cold washing [- - C]. This is selected by pressing the temperature adjustment button.

SPIN SPEED SELECTION



When you select a programme, the maximum spin speed is automatically selected.

To adjust the spin speed between the maximum spin speed and the cancel spinning option [- - -], press the Spin speed button until the desired speed is displayed.

If you have skipped the spin speed you want to set, keep pressing the spin speed adjustment button until the desired spin speed is displayed again.

DELAY TIMER



You can use this auxiliary function to delay the start time of the washing cycle for 1 to 23 hours .

To use the delay function:

- › Press the delay key once.
- › “01h” will be displayed. will light up on the electronic display.
- › Press the delay key until you reach the time after which you want the machine to start the washing cycle.
- › If you have skipped the delay time you would like to set, you can keep pressing the delay key until you reach that time again.
- › To use the time delay function, you need to press the Start/Pause key to start the machine.
- › If you want to cancel the delay:
 - › If you have pressed the Start/Pause key to start the machine, you just need to press the delay key once. will go off on the electronic display.
 - › If you have not pressed the Start/Pause key, press the delay key continuously until goes off on the electronic display. will go off on the electronic display.

NOTE:

In the case that you want to select the auxiliary function feature, if the auxiliary function LED is not on, this means that this feature is not being used in the washing programme you have selected.

TIME DRY SELECTION



To select this feature press “time dry” . If you continue pressing, duration options [0:30, 0:60, 0:90, 120 minutes] will be displayed. You can select the drying duration you want for your cycle.

NOTE:

If one of the 30’ 60’ 90’ 120’ above drying duration options is not displayed when you press the Time Dry button, it is not available for the selected programme.

Table: Recommended drying durations for load amounts:

TIME DRY PROGRAMMES	
Amount of laundry to dry	Recommended drying time
1 kg	30 minutes
2 kg	60 minutes
3.0 kg	90 minutes
3.5 kg	120 minutes
If the amount of laundry to be dried is above 3.5kg, we recommend that you select Cupboard, Hanger or Iron Drying.	

DRY OPTION SELECTION:



By pressing the "Dry option" key, you can use this drying function for the laundry you wish to dry after washing. If you want to enable this function, you should press the drying level key after the program you have selected. The drying level function has 3 types of drying: "Cupboard dry", "Hanger dry", and "Iron dry". If the drying level option is selected, the time on the display will be updated. The time on the display will increase when switching from ironing dry towards Cupboard dry. If you do not want to use the drying level function at the end of the washing programme, please press and hold the key until its LED goes off.

If you select time drying, first of all, 30', 60', 90' or 120' will be displayed depending on the selection, after which the drying time will be added to the selected program and the updated time will be displayed [the total time].

NOTE:

the door will remain locked until the wash or dry cycle is complete. The door will then unlock once the cycle has finished.

DRYING OPTION SELECTION:

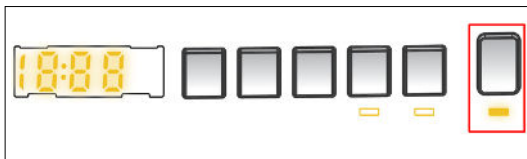
PROGRAMME	SELECTABLE/ NOT SELECTABLE	DRYING PROFILE	FACTORY PRESET	SELECTABLE OPTIONS		
Eco 40-60	S	Cotton Dry	-	Option 1	Option 2	Option 3
Cotton	S	Cotton Dry	-	Option 1	Option 2	Option 3
Cotton 20°C	S	Cotton Dry	-	Option 1	Option 2	-
Synthetics	S	Gentle Dry	-	Option 1	Option 2	Option 3
Wool&Silk	NS	-	-	-	-	-
Duvet	NS	-	-	-	-	-
Rinse	S	Cotton Dry	-	Option 1	Option 2	Option 3
Allergy Safe	S	Cotton Dry	-	Option 1	Option 2	-
Spin / Drain	S	Cotton Dry	-	Option 1	Option 2	Option 3
Rapid 15'	S	Cotton Dry	-	Option 1	-	-
Fast 60'/60°C	S	Cotton Dry	-	Option 1	Option 2	-
Gentle Dry	S	Gentle Dry	Option 2	Option 1	Option 2	Option 3
Cotton Dry	S	Cotton Dry	Option 2	Option 1	Option 2	Option 3
Quick Wash & Dry	NS	Cotton Dry	Option 1	-	-	-
Cotton Wash & Dry	S	Cotton Dry	Option 2	Option 1	Option 2	Option 3

S: Selectable NS: No Selection

SELECTABLE DRYING DURATION LEVELS

	30	60	90	120
Eco 40-60	30	60	90	120
Cotton	30	60	90	120
Cotton 20°C	30	60	90	120
Synthetics	30	60	90	120
Wool&Silk	-	-	-	-
Duvet	-	-	-	-
Rinse	30	60	90	120
Allergy Safe	30	60	90	120
Spin / Drain	30	60	90	120
Rapid 15'	30	60	90	120
Fast 60'/60°C	30	60	90	120
Gentle Dry	30	60	90	120
Cotton Dry	30	60	90	120
Quick Wash & Dry	-	-	-	-
Cotton Wash & Dry	30	60	90	120

START/PAUSE BUTTON



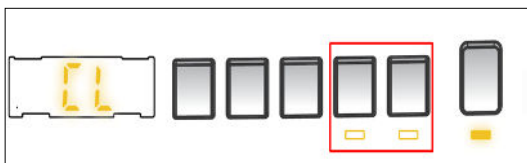
By pressing the Start/Pause button, you can start the programme you have selected or suspend a running programme. If you switch your machine to select a function [standby mode], the

Start/Pause LED light on the electronic display will blink until you start the programme. If you switch your machine to select a function [standby mode], the Start/Pause LED light on the electronic display will blink until you start the programme.

CHILD LOCK

The Child Lock function allows you to lock the buttons so that the wash cycle you have chosen cannot be changed unintentionally.

To activate child lock, press and hold buttons 4 and 5 simultaneously for at least 3 seconds. "CL" will flash on the electronic display for 2 seconds when the child lock is activated.



If any button is pressed or selected programme is changed by the programme dial while the child lock is active, the "CL" symbol will flash on the electronic display for 2 seconds.

If the child lock function is active and a programme is running, when the programme dial is turned to the CANCEL position and another programme is selected the previously selected programme continues from where it was left.

To deactivate the child lock, press and hold buttons 4 and 5 simultaneously for at least 3 seconds until the "CL" symbol on the electronic display disappears.

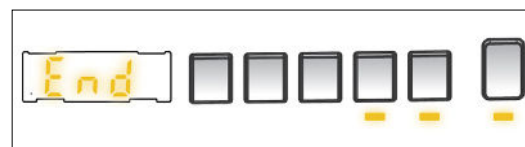
NOTE:

Child lock will not automatically cancel after the programme has completed.

CANCELLING THE PROGRAMME

To cancel a running programme at any time:






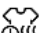

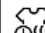
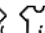
1. Turn the programme dial to the "STOP" position.
2. Your machine will stop the washing operation and the programme will be cancelled.
3. Turn the programme dial to any other programme to drain the machine.
4. Your machine will perform the necessary draining operation and cancel the programme.
5. You can now select and run a new programme.




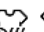
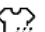


Your machine will stop by itself as soon as the programme you have selected finishes.

- › "END" will flash on the electronic display and a audible tone can be heard.
- › You can open the machine's door and remove the laundry.
- › Leave the door of your machine open to allow the inner part of your machine to dry.
- › Switch the programme dial to STOP position.
- › Unplug your machine.
- › Turn the water tap off

PROGRAMME TABLE

PROGRAMME	ECO 40-60	COTTON	COTTON 20 °C
Selectable washing temperatures [°C]	40°, 60°	60°, 90°, 80°, 70°, 60°, 40°	20°, [Cold water]
Maximum washing/drying capacity [kg]	8,0 / 5,0	8,0 / 5,0	3.5 / 3.5
Selectable spin speed [rev / min]	"- - -" [No spin], 400, 600, 800, 1000, 1200, 1400*	"- - -" [No spin], 400, 600, 800, 1000, 1200, 1400*	"- - -" [No spin], 400, 600, 800, 1000, 1200, 1400*
Laundry type / Descriptions	Heat resistant cotton and linen textiles [underwear, bedding, tablecloths and towels] [max 4,0 kg]	Cotton and linen textiles [underwear, bed sheet, tablecloth, towel [max. 4,0 kg]	Less dirty, cotton and linen textiles. [bed sheet, tablecloth, towel [max. 2.0 kg]
Selectable additional functions	"- -C" [Cold wash], "- - -" [No spin], 	"- -C" [Cold wash], "- - -" [No spin], 	"- -C" [Cold wash], "- - -" [No spin], 
Selectable drying functions **	 	 	 
Programme duration [Min.]	208	145	59

PROGRAMME	SYNTHETICS	WOOL & SILK	DUVET
Selectable washing temperatures [°C]	40°, 30°, [Cold wash],	30°, [Cold wash]	40°, 30°, [Cold wash]
Maximum washing/drying capacity [kg]	2.5 / 2.5	2.5	-
Selectable spin speed [rev / min]	"- - -" [No spin], 400, 600, 800, 1000, 1200*	"- - -" [No spin], 400, 600, 800*	"- - -" [No spin], 400, 600, 800*
Laundry type / Descriptions	Synthetic and synthetic mix textiles. [synthetic content shirt, blouse, socks etc.]	Woollen and wool mix laundry with machine wash labels.	For washing a fibre duvet with a machine washable label. [max. 2.5 kg]
Selectable additional functions	"- -C" [Cold wash], "- - -" [No spin], 	"- -C" [Cold wash], "- - -" [No spin], 	"- -C" [Cold wash], "- - -" [No spin], 
Selectable drying functions **	 	-	-
Programme duration [Min.]	110	43	99




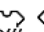

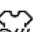

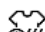
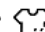
NOTE:


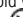

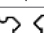
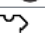
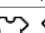
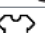

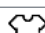
The programme duration may change according to the amount of laundry, tap water, ambient temperature and selected additional functions.








[*] Programme factory default settings.

[**] When you want to select more than one additional function, the additional functions you wish to select may not comply with each other.

Do not dry towels, cotton and linens, and synthetic and sythetic mix clothes together. For drying select the most appropriate drying program for the clothes.

PROGRAMME	RINSE	ALLERGY SAFE	SPIN / DRAIN
Selectable washing temperatures [°C]	[Cold wash]*	60°, 50°, 40°, 30° [Cold wash]	[Cold wash]*
Maximum washing/drying capacity [kg]	8,0 / 5,0	3.5 / 3.5	8,0 / 5,0
Selectable spin speed [rev / min]	"- - -" [No spin], 400, 600, 800, 1000, 1200, 1400*	"- - -" [No spin], 400, 600, 800*	"- - -" [No spin], 400, 600, 800, 1000, 1200, 1400*
Laundry type / Descriptions	This programme can be used for additional rinsing after washing	Baby dresses	You can use this program for any type of laundry if you want an additional spin step after the washing cycle. You can use the drain program to drain the water accumulated inside the machine [adding or removing laundry]. To enable the drain program, turn the program knob to the spin/drain program. After you select "spin cancelled" using the auxiliary function key, the program will start to run.
Selectable additional functions	"- -C" [Cold wash], "- - -" [No spin], 	"- -C" [Cold wash], "- - -" [No spin], 	"- -C" [Cold wash], "- - -" [No spin], 
Selectable drying functions **	 	 	 
Programme duration [Min.]	30	201	24

PROGRAMME	RAPID 15'	FAST 60' 60 °C	GENTLE DRY
Selectable washing temperatures [°C]	30°, [Cold wash]	60°, 50°, 40°, 30° [Cold wash]	-
Maximum washing/drying capacity [kg]	2.0 / 2.0	3.5 / 3.5	3.5
Selectable spin speed [rev / min]	"- - -" [No spin], 400, 600, 800*	"- - -" [No spin], 400, 600, 800, 1000, 1200 1400*	-
Laundry type / Descriptions	For washing less dirty cotton, coloured and linen textiles in a little as 15 minutes. Note: As the washing time is short, less detergent is required than in other programmes. The programme period will increase if your machine detects unstable loading.	Dirty, cotton, coloured and linen textiles. [The washing duration for loads of 2kg and under is 30 minutes]	Cotton laundry with machine dryable label
Selectable additional functions	"- -C" [Cold wash], "- - -" [No spin], 	"- -C" [Cold wash], "- - -" [No spin], 	"- -C" [Cold wash], 
Selectable drying functions **	 	 	 
Programme duration [Min.]	15	60	60

PROGRAMME	COTTON DRY	QUICK WASH & DRY	COTTON WASH & DRY
Selectable washing temperatures [°C]	-	30°*, [Cold wash]	40°*, 90°, 80°, 70°, 60°, 50°, 40°, 30°, [Cold wash]
Maximum washing/drying capacity [kg]	5.0	0.5 / 0.5 kg [3 shirts]	5.0 / 5.0
Selectable spin speed [rev / min]	-	800*	1400*
Laundry type / Descriptions	Cotton laundry with machine dryable label	Cotton, coloured and linen laundry with machine dryable label. NOTE: The machine automatically determines the duration of the programme according to the amount of laundry in the machine.	Cotton and linen textiles [underwear, bed sheets, tablecloth, towel [max. 2,5 kg]
Selectable additional functions	"- -C" [Cold wash], 	"- -C" [Cold wash], 	"- -C" [Cold wash], 
Selectable drying functions **	 	-	 
Programme duration [Min.]	100	33	265

NOTE:

The programme duration may change according to the amount of laundry, tap water, ambient temperature and selected additional functions.

[*] Programme factory default settings.

[**] When you want to select more than one additional function, the additional functions you wish to select may not comply with each other.

Do not dry towels, cotton and linens, and synthetic and sythetic mix clothes together. For drying select the most appropriate drying program for the clothes.

The Eco 40-60 programme is able to clean normally soiled cotton laundry declared to be washable at 40°C or 60°C, together in the same cycle, and that this programme is used to assess the compliance with the EU ecodesign legislation.

The wash and dry cycle is able to clean normally soiled cotton laundry declared to be washable at 40°C or 60°C, together in the same cycle, and to dry it in such a way that it can be immediately stored in a cupboard, and that this programme is used to assess the compliance with the EU ecodesign legislation.

- › For household washer-dryers; the wash and dry cycle is able to clean normally soiled cotton laundry declared to be washable at 40°C or 60°C, together in the same cycle, and to dry it in such a way that it can be immediately stored in a cupboard, and that this programme is used to assess the compliance with the EU ecodesign legislation.
- › The most energy efficient programmes are generally those that run at a lower temperature and for a longer duration.
- › Loading the household washer-dryer up to the capacity indicated by the manufacturer for the respective programmes will contribute to energy and water savings.
- › Programme duration, energy consumption and water consumption values may vary according to wash load weight and type, selected extra functions, water hardness and ambient temperature. According to the EU Eco design regulation the values given for programs other than the ECO 40-60 are indicative only.
- › It's recommended to use liquid detergent for the washing programmes at low temperature. The amount of detergent to be used may vary depending on the amount of laundry and the level of dirtiness of the laundry. Please follow the detergent manufacturers' recommendations for the amount of the detergent to be used.
- › The noise and remaining moisture content are influenced by the spinning speed. The higher spinning speed in the spinning phase, the higher noise and the lower remaining moisture content.
- › You can access the product database where the model information is stored by reading the QR code on the energy label.

TABLE OF PROGRAMMES

Programme Name	Rated Capacity kg	Energy Consumption kWh/cycle			Programme Duration Hours:Minutes			Water Consumption Litres/Cycle			Max. Temperature °C			Remaining Moisture Content % 1400 Rpm		
		Rated Capacity	1/2 Load	1/4 Load	Rated Capacity	1/2 Load	1/4 Load	Rated Capacity	1/2 Load	1/4 Load	Rated Capacity	1/2 Load	1/4 Load	Rated Capacity	1/2 Load	1/4 Load
Cotton 90	8	2,49			03:10			93			81			53%		
Cotton 60	8	0,9			02:25			40			57			53%		
Eco 40-60	8	0,760	0,380	0,220	03:28	02:42	02:42	50	42	36	39	30	24	53%	53%	53%
Synthetic	2,5	0,71			01:50			55			45			53%		
Fast 60' 60°C	3,5	0,95			01:00			32			60			53%		
Cotton 20	3,5	0,11			00:59			32			20			53%		
Wash & Dry	5	4,05	2,04		09:00	05:50		90	65		35	27				

IMPORTANT INFORMATION:

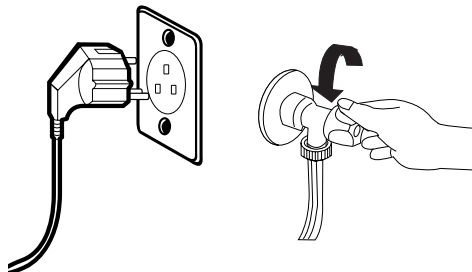
- › Use detergents, softeners and other additives suitable for automatic washing machines only. Using too much detergent can cause excessive foam to occur. If foam occur, the foam absorption system activated.
- › We recommend that you fully clean the washing machine every two months. For periodic cleaning please conduct a maintenance wash, to do this use the Cottons-90 programme. When required, use limescale removers manufactured specifically for washing machines only [follow the manufactures instructions].
- › Never force the door open when your Washing Machine is running. The door will unlock to allow you to open the door of your machine 2 minutes after the completion of a of a wash cycle.
- › The installation and repairing procedures should always carried out by the Authorised Caple Service Agent in order to avoid possible risks. The manufacturer shall not be held liable for damages that may arise from procedures carried out by unauthorised persons.

CLEANING AND MAINTENANCE

⚠ WARNING:

Turn your mains power supply off and remove the plug from the socket before carrying out maintenance and cleaning of your machine.

Turn off the water supply before starting maintenance and cleaning of your machine.



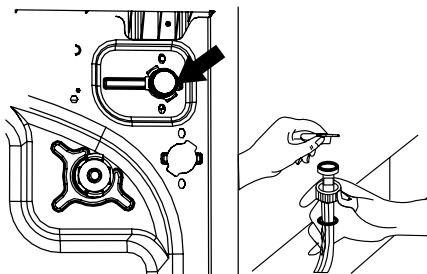
⚠ CAUTION:

Do not use solvents, abrasive cleaners, glass cleaners or all-purpose cleaning agents to clean your Washing Machine. They may damage the plastic surfaces and other components with the chemicals they contain.

WATER INLET FILTERS

Water inlet filters prevent dirt and foreign materials from entering your machine.

We recommend that these filters are cleaned if when the water supply is on and the tap is open your machine is unable to receive sufficient water. We recommend that you clean your water inlet filters every 2 months.



- › Unscrew the water inlet hose from the Washing Machine.
- › To remove the water inlet filter from the water inlet valve, use a pair of long-nosed pliers to gently pull on the plastic bar in the filter.
- › A second water inlet filter is located in the tap end of the water inlet hose. To remove the second water inlet filter, use a pair of long-nosed pliers to gently pull on the plastic bar in the filter.
- › Clean the filter thoroughly with a soft brush and wash with soapy water and rinse thoroughly. Re-insert the filter by gently pushing it back into place.

⚠ CAUTION:

The filters at the water inlet valve may become clogged due to water quality or lack of required maintenance and may break down. This may cause a water leak. Any such breakdowns are out of the scope of the warranty.

PUMP FILTER

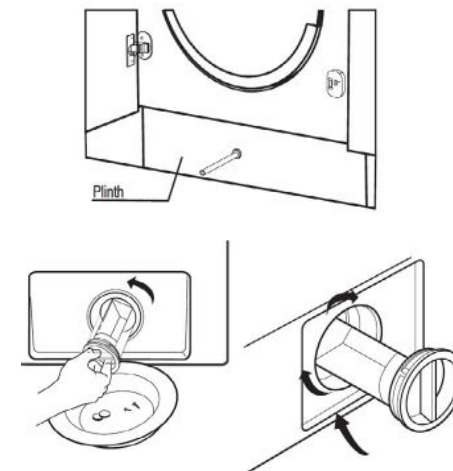
The pump filter system in your Washing Machine prolongs the life of the pump by preventing lint from entering your machine.

We recommend that you clean the pump filter every 2 months.

The pump filter is located behind the cover on the front-lower right corner.

To clean the pump filter:

1. You will need to firstly remove the kitchen plinth to access the filter **
2. Before opening the filter cover, place a container under the filter cover to collect any water left in the machine. Loosen the filter by turning anticlockwise and remove by pulling. Wait for the water to drain.
- NOTE:** Depending on the amount of water inside the machine, you may have to empty the water collection container a few times.
3. Remove any foreign materials from the filter with a soft brush.
4. After cleaning, re-fit the filter by inserting it and turning clockwise.
5. When closing the pump cover, ensure that the mountings inside the cover meet the holes on the front panel side.
6. Replace the kitchen plinth.



⚠ WARNING:

The water in the pump may be hot, wait until it has cooled down before carrying out any cleaning or maintenance.

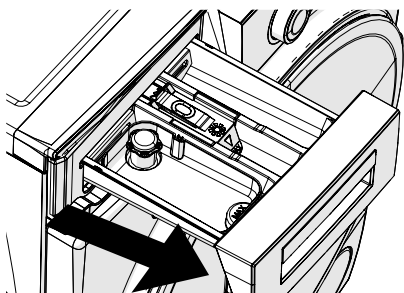
[*] Specifications may vary depending on the machine purchased.

[**] To remove the plinth, please follow the Built-in Installation Manual instructions.

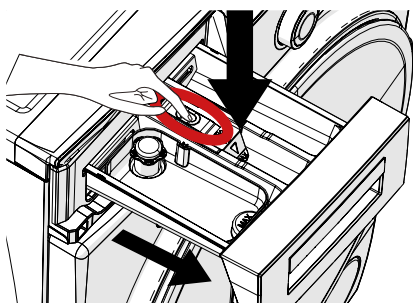
DETERGENT DRAWER

The use of detergent may cause residual build up in the detergent drawer over time. We recommend that you remove the drawer every 2 months to clean the accumulated residue.

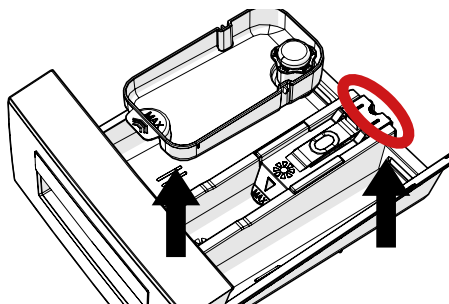
To remove the detergent drawer:



- › Pull the drawer forwards until it is fully extended.
- › Press the section shown inside the detergent drawer [shown by a hand symbol] and continue pulling to remove the detergent drawer from its place.



- › Remove the detergent drawer and disassemble the blue softener section. Clean thoroughly to completely remove any softener residue. Refit the blue section after cleaning and check that it is seated properly.

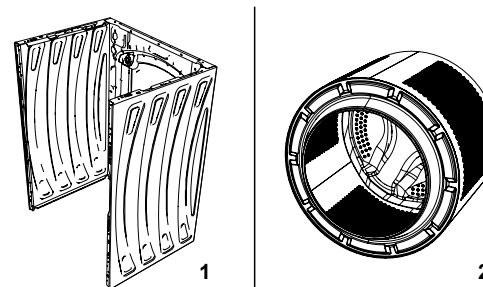


- › Rinse with a brush and lots of water.
- › Collect the residues inside the detergent drawer slot so that they don't fall inside your machine.
- › Dry the detergent drawer with a towel or dry cloth and place it back in the machine.

WARNING:

Do not wash your detergent drawer in a dishwasher.

BODY / DRUM



1. **Body**

Use a mild, non-abrasive cleaning agent, or soap and water, to clean the external casing. Wipe dry with a soft cloth.

2. **Drum**

Do not leave metallic objects such as needles, paper clips, coins etc. in your machine. These objects lead to the formation of rust stains in the drum. To clean such rust stains, use a non-chlorine cleaning agent and follow the instructions of manufacturer of the cleaning agent. Never use wire wool or similar hard objects for cleaning rust stains.

TROUBLESHOOTING

The repair of your machine should be carried out by an authorised service company. If your machine requires repair or if you cannot solve an issue with the information provided below, then you should:

- › Unplug your machine from the mains power supply.
- › Turn off the water supply and contact Caple Service, tel **0117 938 7420**

FAULT	POSSIBLE CAUSE	TROUBLESHOOTING
Your machine does not start.	Machine not plugged in	Plug machine in
	Fuses are faulty	Replace the fuses
	No mains power supply	Check mains power
	Start/Pause button not pressed	Press the Start/Pause button
	Programme dial in 'stop' position	Turn the programme dial to the desired position
Your machine does not intake water.	The machine door is not completely closed	Close the machine door
	Water tap is turned off	Turn tap on
	Water inlet hose may be twisted	Check water inlet hose and untwist
	Water inlet hose clogged	Clean water inlet hose filters [*]
	Inlet filter clogged	Clean the inlet filters [*]
Your machine does not discharge water.	The machine door is not completely closed	Close the machine door
	The feet have not been adjusted	Adjust the feet [**]
	Transit bolts fitted for transportation have not been removed	Remove the transit bolts from the machine [**]
	Small load in the drum	This will not prevent operation of your machine
Excessive foam is formed in the detergent drawer.	Your machine is overloaded with laundry or laundry is unevenly spread	Do not overload the drum. Spread laundry evenly in the drum
	Excessive amount of detergent used	Press the Start/Pause button. To stop the foam, dilute one tablespoon of softener into 1/2 litre of water and pour into the detergent drawer. Press the Start/Pause button after 5-10 mins
Unsatisfactory washing result.	Wrong detergent used	Only use detergents produced for automatic Washing Machines
	Your washing is too dirty for the programme selected	Use the information in the programme tables to select the most appropriate programme
	Amount of detergent used insufficient	Use the amount of detergent as instructed on the packaging
	There is too much laundry in your machine	Check that the maximum capacity for the selected programme has not been exceeded
	Hard water	Increase the amount of detergent following the manufacturer's instructions
	Your laundry is too tightly packed together in the drum	Check that your laundry is spread out

FAULT	POSSIBLE CAUSE	TROUBLESHOOTING
As soon as the machine is loaded with water, water discharges.	The end of water drain hose is too low for the machine.	Check that the drain hose is at a suitable height. [**] .
No water appears in the drum during washing.	No fault. Water is in the unseen part of the drum.	-
Laundry has detergent residue.	Non-dissolving particles of some detergents may appear on your laundry as white spots.	Perform an extra rinse, or clean your laundry with a brush after it dries.
Grey spots appear on the laundry.	There is untreated oil, cream or ointment on your laundry.	Use the amount of detergent as instructed on the packaging in the next wash.
The spin cycle does not take place or takes place later than expected.	No fault. The Unbalanced load control system has been activated.	The Unbalanced load control system will try to spread your laundry. The spinning cycle will begin once your laundry is spread. Load the drum evenly for the next wash.

[*] See the chapter regarding maintenance and cleaning of your machine.

[**] See the chapter regarding installation of your machine.

AUTOMATIC FAULT WARNINGS AND WHAT TO DO

Your Washing Machine is equipped with a built-in fault detection system, indicated by a combination of flashing wash operation lights. The most common failure codes are shown below.

TROUBLE CODE	POSSIBLE FAULT	WHAT TO DO
E01	The door of your machine is not shut properly.	Shut the door properly until you hear a click. If your machine persists to indicate fault, turn off your machine, unplug it and contact Caple Service immediately.
E02	The water pressure or the water level inside the machine may be low.	Check the tap is fully turned on. Mains water may be cut-off. If the problem still continues, your machine will stop after a while automatically. Unplug the machine, turn off your tap and contact Caple Service immediately.
E03	The pump is faulty or pump filter is clogged or electrical connection of the pump is faulty.	Check and clean the pump filter. If the problem persists, contact Caple Service. [*]
E04	Your machine has excessive amount of water.	Your machine will discharge water by itself. Once the water has drained, turn off your machine and unplug it. Turn off the tap and contact Caple Service.

[*] See the chapter regarding maintenance and cleaning of your machine. The minimum period which spare parts must be supplied for a washer dryer is 10 years.



Caple Service
Fourth Way
Avonmouth
Bristol
BS11 8DW

T: 0117 938 1900
E: service@caple.co.uk
www.caple.co.uk