

SALUS PURITI TAP

PRODUCT CODE

› SALPUR/CH

FINISH

› Chrome

FEATURES

- › Chrome plating
- › Filtered water supply only

PARTS INCLUDED

- › PURITI2 Filter kit and fittings
- › 1 x Flexi tails

OPTIONAL EXTRAS

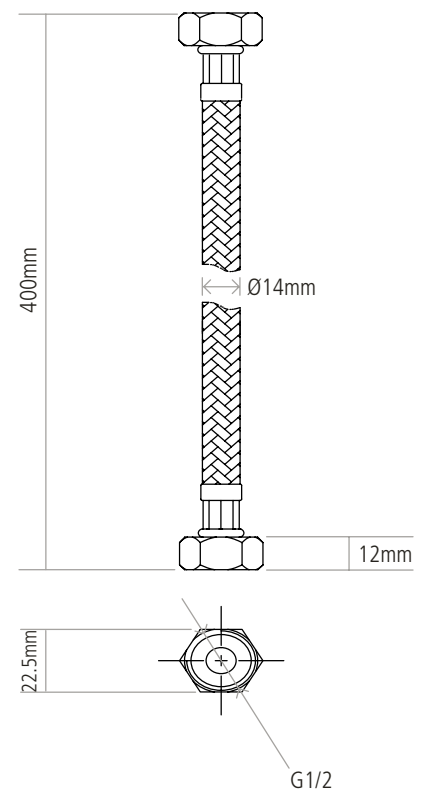
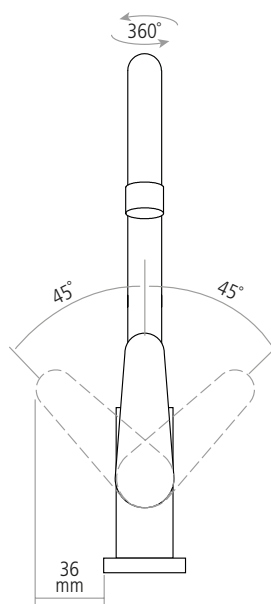
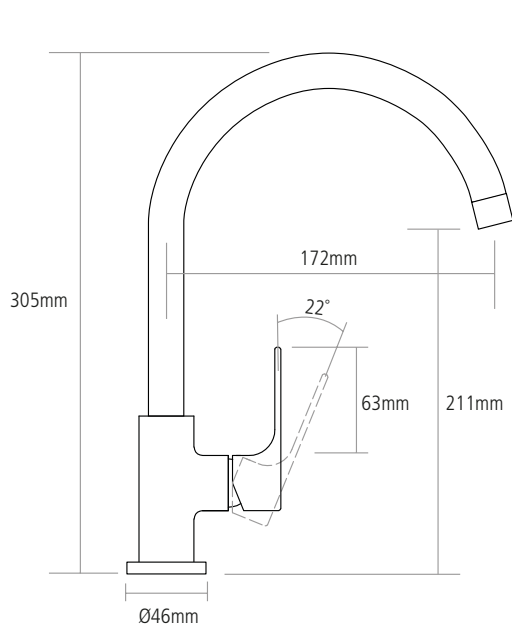
- › FILTERMETER Digital filtered water meter with flow rate display
- › PURITI3 Replacement water filter
- › ECO/AERATOR2
Reduces the flow of water to $\leq 4\text{L/pm}$, to help save water.



DIMENSIONS

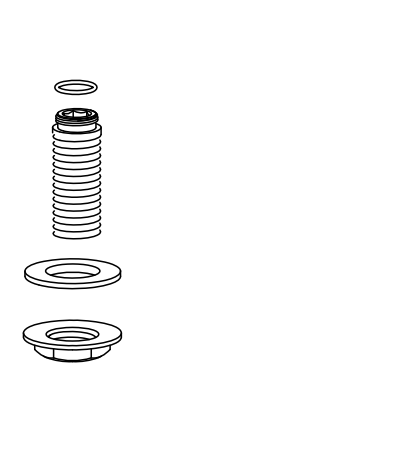
Spout Diameter	Ø22mm
Spout Aerator Size	Ø17mm
Usable Thread Length	70mm
Spare Part Kit Code	KIT/SALPUR/CH
Boxed Weight	1.15kg
Tap Weight	0.8kg
Box Dimensions	370 x 260 x 70

Tail Inlet / Outlet Size	M10 / 1/2"
Inlet Type / Length	Flexible stainless braided hose / 400mm



Worktop cut out 35mm required

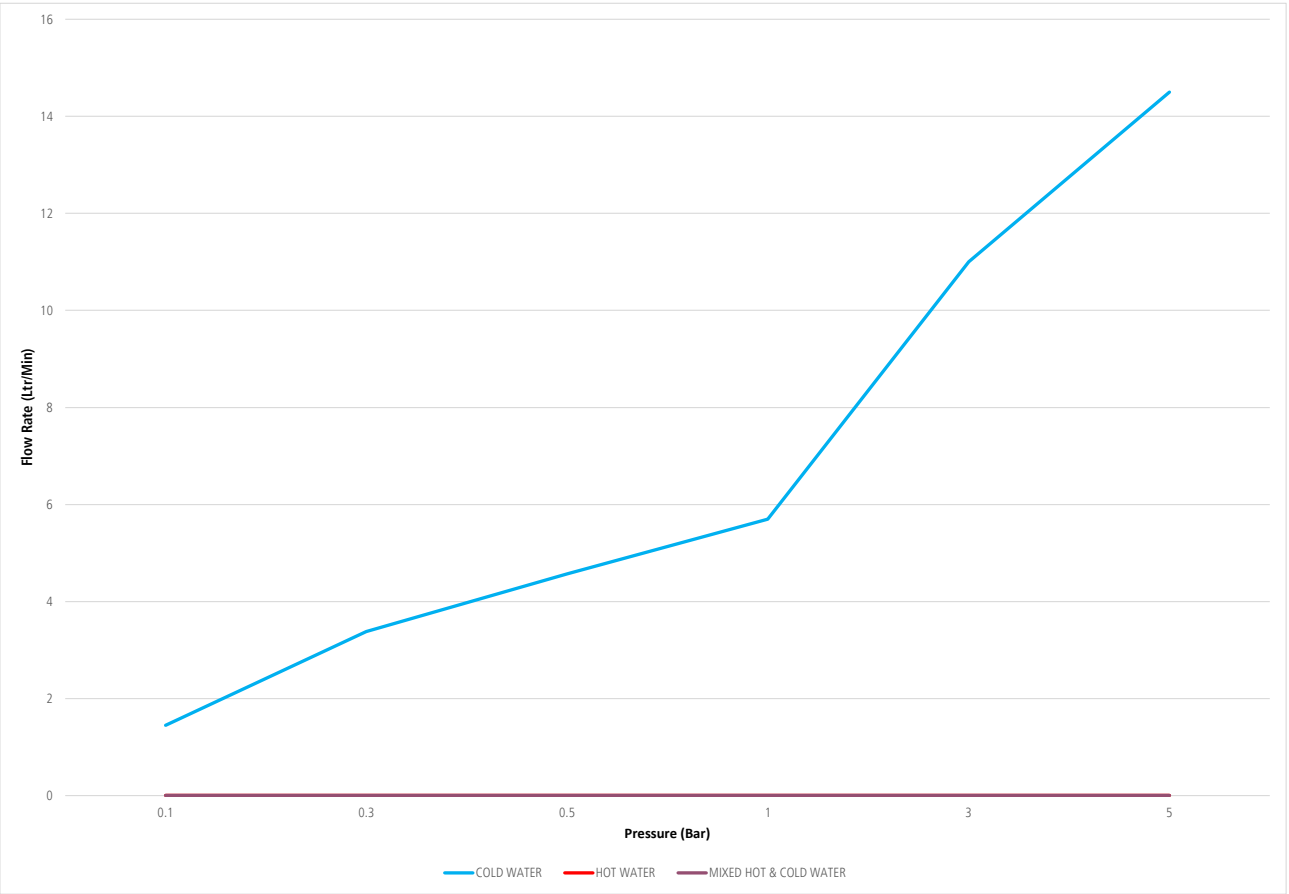
FIXING TYPE



TAP FLOW INFORMATION

Min/Max Water Pressure	0.3 / 5 bar
Control Valve type	Single lever
Flow type	Single
Aerator included	Y

FLOW RATES



Bar pressure	Flow rate (ltr/min)		
	Cold water	Hot water	Mixed hot & cold water
0.1	1.45	/	/
0.3	3.38	/	/
0.5	4.57	/	/
1	5.7	/	/
3	11	/	/
5	14.5	/	/