



## MODE 50 INSET OR UNDERMOUNTED



### PRODUCT CODE

MODE050

### FINISH AVAILABLE

 Stainless steel

### FEATURES

- 1mm brushed stainless steel
- No tap facility
- 90mm waste outlet for a basket strainer waste
- Suitable for a waste disposer
- Waste and overflow included

### PLUMBING OPTION

- Plumbing kit CPK100

### FITTING OPTIONS



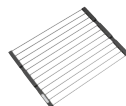
Inset

Undermounted

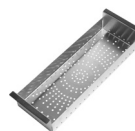
### ACCESSORY OPTIONS



Basket strainer waste  
decorative cover  
CWC2



Stainless steel foldmat  
FMAT/SS

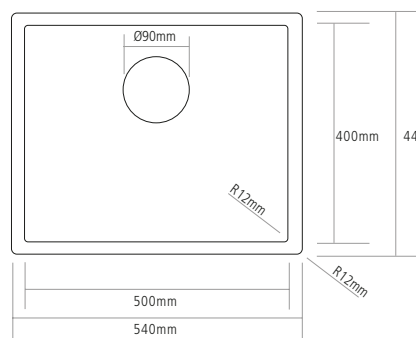


Stainless steel  
strainer bowl  
CSB29SS



Roweca anthracite  
chopping board  
VACB

### DIMENSIONS



**BOWL DEPTH:** 200MM

**MIN. BASE UNIT:** 600MM

**INSET CUT-OUT SIZE:** 524 X 424MM

**NOTE:** For cut-out shape go to [www.caple.co.uk](http://www.caple.co.uk) for template