

## Instruction manual for built-in washer dryer

Model code: WDi2203



# CONTENTS

## BEFORE USE

- >COMPONENTS ..... 03
- >SAFETY INSTRUCTIONS ..... 04
- >PREPARATION ..... 05
- >INSTALLATION ..... 06
- >CONTROL PANEL ..... 08

## USING THE APPLIANCE

- >PROGRAM SELECTION ..... 10
- >CONSUMPTION AND TECHNICAL DATA .. 11
- >WASHING METHODS ..... 12
- >CLEANING & CARE..... 16

## MAINTENANCE

- >DISPLAY CODES ..... 18
- >TROUBLESHOOTING..... 19
- >WIRING CIRCUIT.....20

## LEGEND

☒ Yes

☒ No

☐ Optional



For your safety, any instructions in this manual with this "Warning" sign must be followed strictly.

# BEFORE USE

## Thank you for purchasing a Caple appliance

Please read these instructions carefully before using this appliance. The instructions contain important information which will help you get the best out of the appliance and ensure safe and proper installation, use and maintenance.

Keep this manual in a convenient place so you can always refer to it for the safe and proper use of the appliance.

If you sell the appliance, give it away, or leave it behind when you move house, make sure you also pass on this manual so that the new owner can become familiar with the appliance and safety warnings.

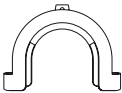
## ACCESSORIES

Check the accessories and literature  
in accordance with this list:

1x Inlet hose assembly



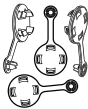
1x Drain hose bracket



1x User manual



4x Blanking plugs



1x Warranty card



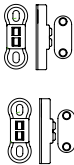
1x Bottom Cover



2 x Door hinges



2 x Door hinges assembly





## SAFETY INSTRUCTIONS

This appliance can be used by children aged from 8 years and above and persons with reduced physical, sensory or mental capabilities or lack of experience and knowledge if they have been given supervision or instruction concerning use of the appliance in a safe way and understand the hazards involved. Children must not play with the appliance. Cleaning and user maintenance shall not be made by children without supervision.

### BEFORE SWITCHING THE APPLIANCE ON FOR THE FIRST TIME

#### DO ...

- ☒ ... Make sure that the transport bolts are removed.
- ☒ ... keep surrounding areas free from accumulation of lint, dust and dirt.
- ☒ ... Make sure that the plug is accessible.
- ☒ ... Hold the plug and not the electric cable when unplugging the power supply.
- ☒ ... Make sure that the fuses in the power circuit are rated for 15A.
- ☒ ... Keep away from heat sources and direct sun light to prevent plastic and rubber components from aging.
- ☒ ... Make sure that the power cord is not caught under or in the appliance and avoid damage to the power cable.
- ☒ ... Check that hose joints and connections are firm and no water can leak. If joints are loose or there is leakage, turn off the water supply and refix. Do not use the washing machine until the hoses are properly fixed.

### DURING DAILY USE OF THE APPLIANCE

#### DO ...

- ☒ ... Pull up zips and fix loose threads to prevent the items from being entangled. If necessary, put small items into a net bag or pillow.
- ☒ ... Turn off the machine after each wash program and switch it off at the mains to save electricity and for safety. Wipe clean the lower part of the porthole.
- ☒ ... Keep the door slightly open when the washing machine is not in use to prevent formation of odours.
- ☒ ... Let the power cord be replaced by the manufacturer, his service agent or other accordingly qualified persons, in case it is damaged.
- ☒ ... Ensure that the appliance is not used by persons with reduced physical, sensory or mental capabilities, lack of experience and knowledge without supervision or instruction by a person responsible for their safety.
- ☒ ... Supervise children to ensure that they do not play with the appliance.

#### DO NOT ...

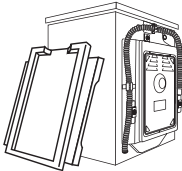
- ☒ ... Touch or use the appliance when barefoot or with wet or damp hands or feet.
- ☒ ... Use flammable detergent or dry cleaning agent.
- ☒ ... Use any flammable sprays in close vicinity to the appliance.
- ☒ ... Remove or insert the plug in the presence of flammable gas.
- ☒ ... Allow children or infirm persons to play with the appliance or packing materials.
- ☒ ... Install the appliance outdoors in a damp place, or in an area which may be prone to water leaks such as under or near a sink unit. In the event of a water leak allow the machine to dry naturally.
- ☒ ... Place the washing machine directly on a carpet, or close to a wall or furniture.

#### DO NOT ...

- ☒ ... Touch the washer door during the washing process - it gets hot!
- ☒ ... Place heavy objects or sources of heat or damp on top of the appliance.
- ☒ ... Hot wash foam rubber or sponge-like materials.
- ☒ ... Open the detergent distribution drawer during the wash cycle.
- ☒ ... Force the washer door open. The door is fitted with a self-lock device and will open shortly after the washing procedure is ended.
- ☒ ... Open the washer door if the water level is visibly over the porthole.
- ☒ ... Cover the washing machine with plastic cover so that inside dampness cannot be kept in.

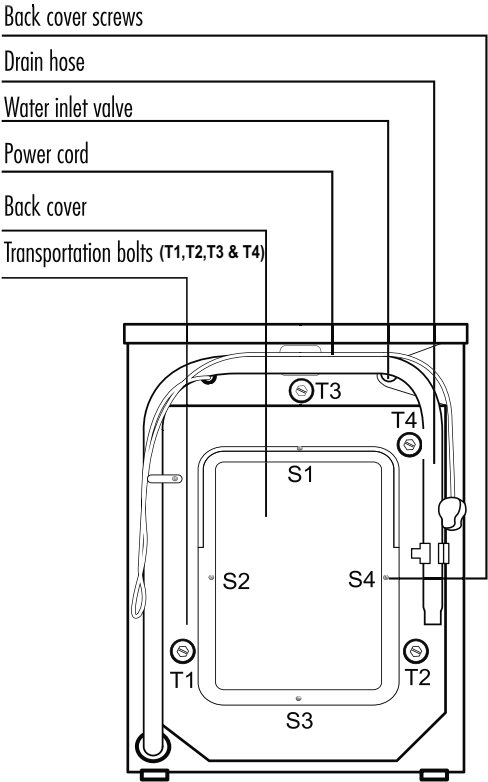
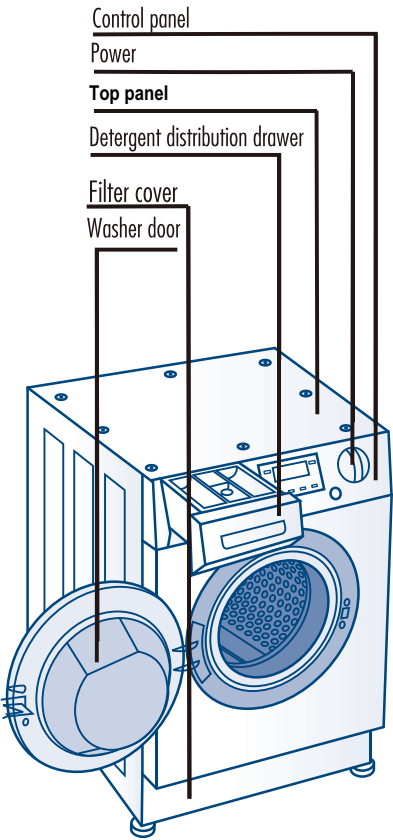
**PREPARING THE MACHINE**

Remove all the packing materials to prevent unsteadiness, including the polystyrene base. Upon opening the package, water drops may be seen on the plastic bag and the porthole. This is normal phenomenon resulting from water tests in the factory.



**DESCRIPTION**

This diagram may be slightly different from the layout of the washing machine you have just purchased due to technical improvements.



# INSTALLATION

## INSTALL THE NOISE REDUCTION BOARD

By installing this board, the noise of the washing machine can be reduced.

1. Remove the adhesive from the back side of the felt and paste the felt onto the back side of the protection board in a symmetrical position to the board's corners.

Lean (push) the machine backwards and unscrew the four feet.

Remark: not lean or push the machine towards it's front !

2. Adjust the board in the way to align the four holes with the four screw fixing holes, felt should be at back side of the board.
3. Install the four feet and fix the board to the cabinet, then fix the machine in the desired position

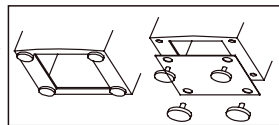
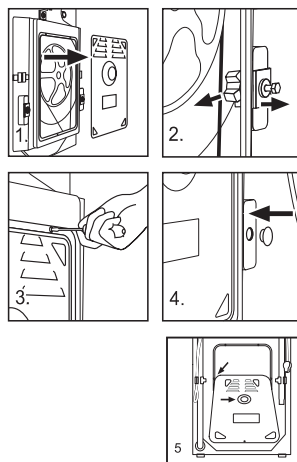


fig.1

## REMOVE THE TRANSPORTATION BOLTS

The transportation bolts are designed for clamping components inside of the washing machine during the transportation process.

1. Remove the back cover.
2. Remove the four bolts on the rear and take out the stabilisers from within the machine.
3. Replace the back cover.
4. Fill the holes left by the bolts with blanking plugs supplied.



### **Note:**

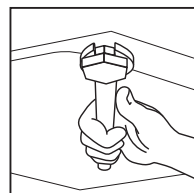
**1.Keep the transportation bolts and stabilisers in a safe place for later use.**

**2.When replacing the back cover, ensure convex surface is facing outwards, then refit the back cover as shown in Fig. 5.**

## ADJUSTING THE WASHER DRYER MACHINE

There are adjustable feet under the bottom of the washing machine. Before use, they should be adjusted so that the machine is level. This will minimise vibrations and thus noise during use. It will also reduce wear and tear. We recommend using a spirit level to level the appliance. The product should be level and stable.

Slacken the lock nuts and adjust the feet then tighten the lock nuts again. See the diagram on the right.



### **CAUTION**

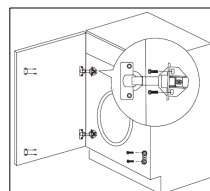
Do not install where temperatures can fall below freezing as this can cause severe damage to your machine.

## FITTING THE FURNITURE DOOR

Please refer to the building in template for instructions on how to fit your integrated appliance and connect the furniture door to the product.

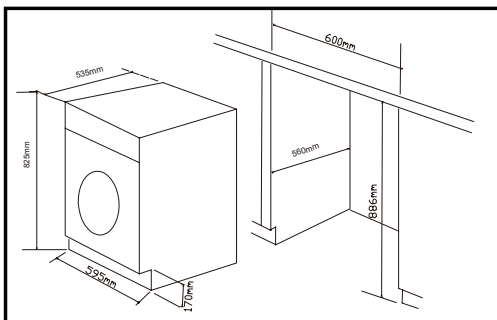
Mount the furniture door to the cabinet of the washer dryer, using the hinges supplied.

Fix the magnet assembly to the front of the washer dryer and the furniture door.



## PRODUCT AND APERTURE DIMENSIONS

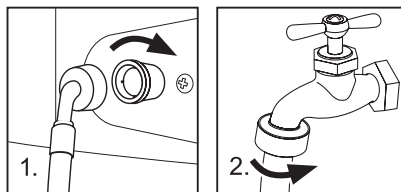
Appliance dimensions		Aperture dimensions
Height:	825 mm	886 mm
Width:	595 mm	600 mm
Depth:	535 mm	580 mm



## INLET HOSE

1. Connect the nut on the inlet hose to the connector on the water valve.
2. Attach the hose to the cold water tap

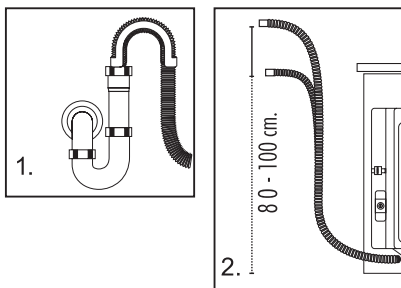
**Note: Connect to the water supply using new hose sets. old hose-sets should not be reused.**



## DRAIN HOSE

1. Use the drain hose bracket to secure the drain hose and prevent the outflow of water. Don't extend the length of the drain hose; if an extended hose is required, please consult an engineer.
2. The height of the drainage outlet must be 80-100 cm. Fix the drain hose to the clip at the back of the washing machine to prevent it from dropping off.

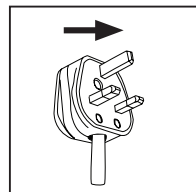
**Note: The drain hose should not be submerged in water and should be securely fixed and leak-free. If the drain hose is placed on the ground or if the pipe is at a height of less than 80cm, the washing machine will continuously drain while being filled (self-siphoning).**



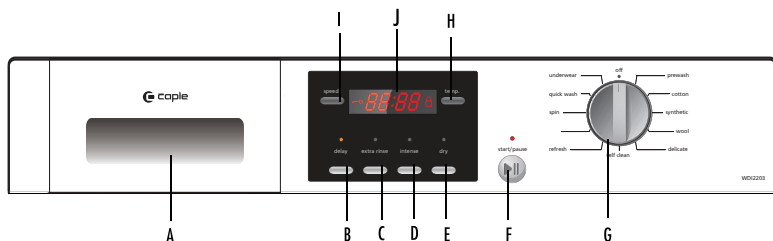
## CONTINENTAL WIRING

Before connecting to the power supply, check:

- The socket is adequate for the maximum power of the washing machine (For safety, fuses in the power circuit should be rated for no less than 13A).
- The voltage should be 220~240V/50Hz
- The power outlet should be capable of accepting the Washer Dryer plug.
- Connect the machine to an earthed socket outlet.



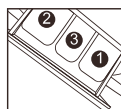
# CONTROL PANEL



- |          |                    |          |                    |          |                       |
|----------|--------------------|----------|--------------------|----------|-----------------------|
| <b>A</b> | Detergent drawer   | <b>E</b> | Dry button         | <b>I</b> | Spinning Speed Button |
| <b>B</b> | Delay button       | <b>F</b> | Start/Pause Button | <b>J</b> | Display               |
| <b>C</b> | Extra rinse button | <b>G</b> | Program knob       |          |                       |
| <b>D</b> | Intense button     | <b>H</b> | Wash Temp button   |          |                       |

## OPERATIONAL FUNCTIONS

- A** → Detergent drawer    The drawer contains three compartments:
- 1: Prewash detergent
  - 2: Main wash detergent
  - 3: Fabric softener



**NOTE:** The recommendation on the type of detergents is suitable for various wash temperatures, please refer to the detergent manufacturer instructions for further information.

- B** → Delay button    Touch this button lightly, the washing machine will start operation after a period of time and the corresponding indicator will go on. The range is 0.5-24 hours; each touch of this button increases half an hour. After the button is set, press the Start/Pause button to start countdown of the set time.

**NOTE:** The delay time must be longer than the program duration time, otherwise the machine will start immediately

- C** → Extra rinse button    Press this button, the washing machine will perform additional rinses. Press the button once to select one additional rinse. The display will show "P-1". Press the button repeatedly and the screen will display "P-2" or "P-3", indicating two or three additional selected rinses. The "extra rinse light" is activated and flashes during the performance. "P-1/2/3" is displayed. The light turns off and the display disappears when the extra rinse ends.

**NOTE:** this function is not available in all programs.

- D** → Intense button    Press this button to select, the indicator light will illuminate. You can increase wash times and rinsing times in main wash stage of the selected program, which is suitable for dirty clothes.
- E** → Dry button    Press the button to select, the Dry indicator light will illuminate. At this time the washing program can not be selected. The washer dryer performs the drying function only.
- F** → Start/Pause Button    When the washing machine is connected to the power socket and a program is selected, lightly touch this button to start operation. During a wash cycle, touch it lightly, operation will stop and the indicator light start blinking. Touch it again to resume operation. To cancel a wash program during a wash cycle, touch this button, when the indicator light start blinking, turning the Program knob to "off", the program will be cancelled.



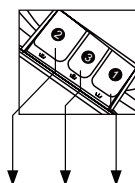
- G**      →Program knob      \_By turning the knob clockwise/counterclockwise, the required program can be selected. There are 11 programs available. Note: Program off function is only used to turn off the washer dryer
- H**      →Wash Temp      \_ Touch this button lightly, the washing temperature will be displayed on the display screen. Select a temperature according to the type of laundry.
- I**      →Spin Speed      \_Touch this button lightly to select the desired speed. When a speed is set, it will be displayed on the display screen.  
**Note: Different water temperatures and spinning speeds can be set for different laundries. Wash using the default settings if there is no special requirement.**
- J**      →LED Display      \_Information for example, remaining wash time and error messages will be shown here.  
**Note: After a wash programs started the display will go on and the remaining wash time decreases. As the water pressure and temperature may differ, the remaining time may be adjusted accordingly. When the laundry is not balanced during spinning, the time may be automatically prolonged.**

## NOTE

To select the drying time, press the dry button. Each press will increase the time by 30 minutes, for example 30mins (for 0.5kg of wet washing), 60mins (for 0.75kg of wet washing), 90mins (for 1.2kg of wet washing). If you select 120mins this will allow the machine to use the sensor dry programme and adjust the timing to run as long as required until the contents is sufficiently dry. Please note: The indicated 120min for the sensor programme is a guide, the actual dry time will adjust throughout the cycle depending on the contents of the load.

# USING THE APPLIANCE

## PROGRAM MODES



- 1 Detergent compartment for prewash mode
- 2 Detergent compartment
- 3 Compartment for softener and other additives

Program	Maximum	Preset	2	3	1	LaundryType	Preset spin Speed
1 ↪ Refresh	--	--	<input checked="" type="checkbox"/>	<input checked="" type="checkbox"/>	<input checked="" type="checkbox"/>	Cotton fabrics	No spin
2 ↪ Dry	--	--	<input checked="" type="checkbox"/>	<input checked="" type="checkbox"/>	<input checked="" type="checkbox"/>	3kg maximum	No spin
3 ↪ Spin	--	--	<input checked="" type="checkbox"/>	<input checked="" type="checkbox"/>	<input checked="" type="checkbox"/>	None	1000
4 ↪ Quick Wash -- to 30 °C	0°C	0°C	<input checked="" type="checkbox"/>	<input type="checkbox"/>	<input checked="" type="checkbox"/>	Cotton or synthetic	800
5 ↪ Underwear -- to 90 °C	60°C	60°C	<input checked="" type="checkbox"/>	<input type="checkbox"/>	<input checked="" type="checkbox"/>	Underwear	1000
6 ↪ Prewash -- to 90 °C	40°C	40°C	<input checked="" type="checkbox"/>	<input type="checkbox"/>	<input checked="" type="checkbox"/>	Cotton fabrics	1000
7 ↪ Cotton -- to 90 °C	40°C	40°C	<input checked="" type="checkbox"/>	<input type="checkbox"/>	<input checked="" type="checkbox"/>	Cotton fabrics	1000
8 ↪ Synthetic -- to 60 °C	40°C	40°C	<input checked="" type="checkbox"/>	<input type="checkbox"/>	<input checked="" type="checkbox"/>	Fast colour synthetic	1000
9 ↪ Wool -- to 40 °C	0°C	0°C	<input checked="" type="checkbox"/>	<input type="checkbox"/>	<input checked="" type="checkbox"/>	Woolen fabrics	600
10 ↪ Delicate -- to 40 °C	0°C	0°C	<input checked="" type="checkbox"/>	<input type="checkbox"/>	<input checked="" type="checkbox"/>	Cotton or synthetic	600
11 ↪ Self Clean -- to 90 °C	90°C	90°C	<input checked="" type="checkbox"/>	<input type="checkbox"/>	<input checked="" type="checkbox"/>	None	1000

Note: Program 'off' is only used to turn the washer dryer off

☒ Yes    ☒ No    ☐ Optional

## CONSUMPTION TABLE

PROGRAM	MAX. LOAD	TEMPERATURE	WASHING TIME	SPIN DRYING PERFORMANCE	ENERGY CONSUMPTION	WATER CONSUMPTION
→ Refresh	2kg	--	0:30	--	--	--
→ Dry	3kg	--	2:00	--	--	--
→ Spin	6kg	--	0:12	--	--	--
→ Quick Wash	3kg	--°C	0:15	--	--	--
→ Underwear	3kg	60°C	1:51	--	--	--
→ Prewash	6kg	40°C	2:04	--	--	--
→ Cotton	6kg	40°C	1:49	--	--	--
✱ Cotton	6kg	60°C	3:00	53%	0.98kwh	46L
→ Synthetic	3kg	40°C	1:10	--	--	--
→ Wool	2kg	--°C	0:45	--	--	--
→ Delicate	1kg	--°C	0:45	--	--	--
→ Self Clean	--	90°C	1:00	--	--	--

The standard 60 °C and 40 °C cotton programmes are suitable to clean normally soiled cotton laundry and they are the most efficient programmes in terms of combined energy and water consumptions for washing that type of cotton laundry; The actual water temperature may differ from the declared cycle temperature;

\*) Energy Label Program Settings: 1.Washing "Cotton+60°C+Intense+Max speed" 2.Dring: "Dry"

## TECHNICAL DATA

### WDI2203

Power source	220 - 240V~/50Hz
Max. working current (A)	10
Water pressure (MPa)	$0.03 \leq P \leq 1$
Nominal load (kg)	6
Spinning speed (r/min)	1200
Washing programs	11
Drying programs	1
Max power (W)	2000
Dimensions (HxDxW mm)	825 x 535 x 595
Net weight (kg)	65
Power consumption of the off-mode(W)	0.48
Power consumption of the Left-on(W)	0.48
Dry heating(W)	1400
Dry load(kg)	3

## CHOOSE THE BEST DETERGENT

	Universal	Color	Delicate	Special	Softener
Wool	-	-	-	L	O
Synthetic	L/P	L/P	L	-	O
Quick	L/P	L/P	-	-	O
Cotton	L/P	L/P	-	-	O
Mix	L/P	L/P	-	-	O
Delicate	-	-	L	-	O

Detergent	Temperature range in °C
L Liquid	cold - 60
P Powder	40 - 90
O Optional	---
- No	---

If using liquid detergent, it is not recommended to activate the delayed start. The amount of detergent necessarily choose to package information!  
Info: Modern washing detergents at low temperatures.

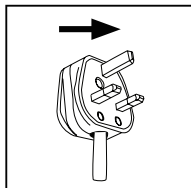
# WASHING METHODS

This Washer Dryer is for domestic use only. Do not use it for purposes other than that for which it was designed. Follow the instructions given on the label of each garment and wash only machine-washable garments. Do not dry a garment that has been cleaned with industrial chemicals



## POWER SUPPLY

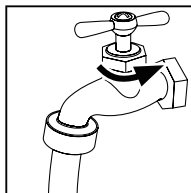
Connect the washing machine to the power supply (220V to 240V~/50Hz).



## WATER CONNECTION

Connect the hose to the cold water connection. Turn on the tap. The water must be clean and clear.

**Note: Before use, check for any leaks in the joints between the tap and the inlet hose by turning on the tap.**

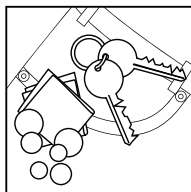
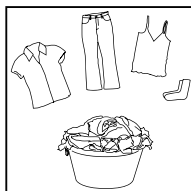


## PREPARING THE LAUNDRY

- Sort out clothes according to fabric (cotton, synthetics, wool or silk) and to how dirty they are.
- Separate white clothes from coloured ones. Wash them first by hand to check if they fade or run.
- Empty pockets (keys, coins, etc.) and remove the harder decorative objects (e.g. brooches).

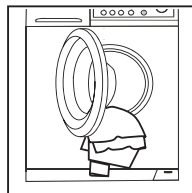
**Attention: Small parts (like buttons, etc), or sharp (zips & buckles) items may cause damage to the machine.**

- Garments without hems, underwear, finely woven textile such as fine curtains are to be put into wash bag (it is better not to wash them in a washing machine).
- Close zippers and hooks, make sure the buttons are sewn on tightly and place small items such as socks, belts, bras, etc. in the wash bag.
- Unfold large pieces of fabric such as bed sheets, bedspreads, etc.
- Turn shirts inside out.



## **LOADING THE MACHINE**

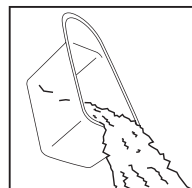
- When first using the washer dryer, let it run unloaded for one program to prevent the laundry from being tainted by oil or dirty water from the washing machine. Before washing you should run the machine without laundry, but with detergent, with 60°C program.
- Open the washer door, put in laundry piece by piece. Close the door tightly.
- Do not overload the washer dryer.



## **SELECTING DETERGENT**

The washing efficiency and the performance is determined by the quality of detergent used. Special non-foaming detergent produces good washing results. Use specific detergents for synthetic and woollen goods. Do not use dry cleaning agents such as trichloroethylene and similar products.

**Note:** Do not add more detergent than needed.  
Please follow the usage recommendation on the detergent package.

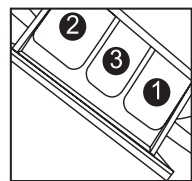


## **ADDING DETERGENT**

Slide out the detergent drawer and put the required detergent and softening agent into the corresponding compartments. Push back the drawer gently. (Refer to the instructions on the drawer)

### **Caution:**

- For pre-wash program, detergent should be added to both compartments 1 and 2. For other programs, do not add detergent to compartment 1.
- Use liquid detergent according to the instructions on its package. Do not use liquid detergent if the Prewash mode or "Delay" is selected.
- Do not overuse softener as it may damage artificial fibres.



## **SELECTING PROGRAM**

To get the best washing results, an appropriate washing program should be selected according to the laundry type. Please turn the program knob to select the right program.

## **SELECTING ADDITIONAL FUNCTIONS**

Select the required options. (Refer to the "Control panel" pages 08 and 09). Otherwise keep all the buttons deselected. If you wish to dry your laundry directly after the wash cycle is finished, please press the "Dry" button.



## **SETTING SPIN SPEED**

Touch this button lightly to select the desired speed.  
The max spin speed is different according to each program.



## **SETTING WASHING TEMPERATURE**

Press and hold down the temperature button until the desired temperature is selected

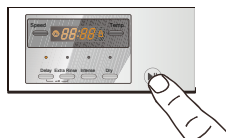
The symbol “- -” for no water heating.



## **START WASHING**

When the washer dryer is connected to the power socket and a program is selected, lightly touch this button to start operation. During a wash cycle, touch it lightly, operation will stop and the indicator light start blinking. Touch it again to resume operation. To cancel a wash program during a wash cycle, touch this button, when the indicator light start blinking, press the Power switch, the program will be cancelled.

The washer dryer will stop operation automatically when a washing cycle ends. The "End" sign will appear on the display. Open the washer door and take out the laundry.



## **AFTER WASHING**

Turn off the water supply and unplug the power cord. Open the washer door to prevent formation of moisture and odours. Let the door open while not used.

## **TIPS FOR SAVING ENERGY**

1. Collect clothes for one full wash load.
2. Avoid overloading the washing machine.
3. Prewash only heavily soiled clothes.
4. Reduce the amount of detergent or choose quick wash or delicate wash programs for slightly soiled clothes.
5. Select the correct wash temperature, many modern detergents can wash with great results in low temperature settings. Only use higher temperatures for heavily soiled clothes.
6. Follow the dosage recommendation on the detergent package to avoid using too much detergent.

CARE GUIDE

Machine Wash, COLD

Machine Wash, WARM

Machine Wash, HOT

Machine Wash, COLD Permanent Press

Machine Wash, WARM Permanent Press

Machine Wash, HOT Permanent Press

Machine Wash, COLD Gentle Cycle

Machine Wash, WARM Gentle Cycle

Machine Wash, HOT Gentle Cycle

Hand Wash

Do Not Wash

Bleach as needed  
Any bleach, like Clorox®, may be safely used

Non-chlorine Bleach as needed  
Use only a color-safe bleach, like Clorox 2®

Do Not Bleach  
No bleach product should be used including detergents with bleach - or follow bleach package test procedures to test for bleach safety.

Wool Mark

Tumble Dry, NO HEAT

Tumble Dry, LOW HEAT

Tumble Dry, MEDIUM

Tumble Dry, HIGH

Tumble Dry, Permanent Press, NO HEAT

Tumble Dry, Permanent Press, LOW HEAT

Tumble Dry, Permanent Press, MEDIUM

Tumble Dry, Gentle Cycle, NO HEAT

Tumble Dry, Gentle Cycle, LOW HEAT

Tumble Dry, Gentle Cycle, MEDIUM

Do Not Tumble Dry

Line Dry

Drip Dry

Dry Flat

Don't dry clean

Dry on clothes hanger

Tumble dry, Medium heat

Tumble dry, low heat

Don't tumble dry

Iron, Steam or Dry, with LOW HEAT

Iron, Steam or Dry, with MEDIUM HEAT

Iron, Steam or Dry, with HIGH HEAT

Do Not Iron with Steam

Do Not Iron

Dryclean May appear with additional letters and/or lines Take this item to a professional drycleaner

Do Not Dryclean

Dry cleaning with any solvent

Dry cleaning with pericloride

LOAD WEIGHT REFERENCE

Bed sheet (single)	Cotton	Approximately 800g
Blanket	Wool	Approximately 3000g
Blended fabric clothes	/	Approximately 800g
Jackets	Cotton	Approximately 800g
Jeans	/	Approximately 800g
Overalls	Cotton	Approximately 950g
Ladies Pyjamas	/	Approximately 200g
Shirts	/	Approximately 300g
Socks	Blended fabrics	Approximately 50g
T-Shirts	Cotton	Approximately 300g
Underwear	Blended fabrics	Approximately 70g

PLEASE NOTE

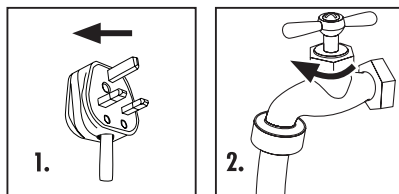
The final part of a drying cycle is a cooling cycle without heat to ensure that the dried items are left at a temperature that keeps them undamaged.

# MAINTENANCE

## CARE AND CLEANING

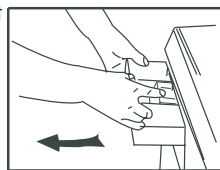
### AFTER WASHING

Turn off the water supply and pull out mains plug after each wash. Open the washer door to prevent formation of moisture and odours. If the washing machine is left idle for a long period, drain the water in the machine and replace the drain hose.



### CLEANING THE DETERGENT DRAWER

Pull out the drawer and press the blue catch in the conditioner compartment flush it clean under the cold tap and replace by aligning with the machine and pressing forwards.

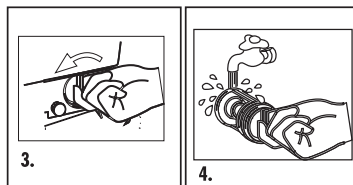
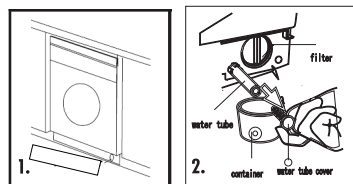


### CLEANING THE MACHINE

Unplug the machine during cleaning and maintenance. Use a soft cloth dampened with soap to clean the machine case and rubber components. Do not use organic chemicals or corrosive solvents.

### CLEANING THE FILTER

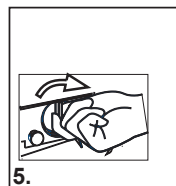
1. Pull out the bottom cover carefully with thin objects or a tool
2. Pull the drain hose out of the sewage set in the bottom panel.  
Hold the drain hose in a water container, take out the plastic plug and let the excess water flow into the container. Reinstall the plug and push the hose back.
3. Remove the filter by turning counterclockwise.
4. Flush the filter clean with running water.
5. Replace the filter by turning clockwise and remount the cover.



#### **Caution:**

**1. The filter must be in place, or it may lead to leakage.**

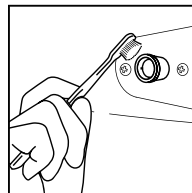
**2. Place a container under the drain pump filter, to collect any excess water that may come out the drain pump when the filter is removed.**





## **WATER INLET VALVE AND INLET VALVE FILTER**

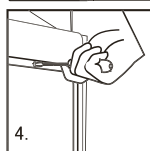
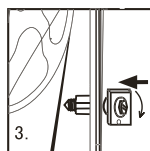
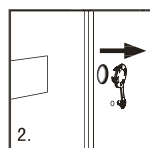
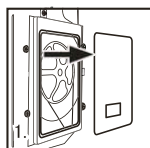
To prevent blockage to the water supply by ingress of foreign substances, clean the water inlet valve and inlet valve filter regularly.



## **MOVING THE MACHINE**

If the machine is to be moved, replace the transportation bolts removed before installation to prevent damage as shown below.

1. Remove the back cover.
2. Remove the blanking plugs.
3. Insert the plastic stabilisers and the transportation bolts; Tighten the bolts with a spanner.
4. Refit the back cover.



## **LONG PERIODS WITHOUT OPERATION**

If the washer dryer is left idle for a long period, pull out the electrical plug and turn off the water supply. Open the washer door to prevent formation of moisture and odours. Leave the door ajar while not in use.

## DISPLAY CODES AND SPECIAL FUNCTIONS

CODES	CAUSES	SOLUTIONS
Err1	→ Door is not properly shut.	_ Shut the door properly.
Err2	→ Drainage error, water not emptied within 6 minutes.	_ Clean the filter and check the drain hose for blockage. If error still exists, please contact the maintenance personnel.
Err3	→ Temperature sensor not properly connected or damaged.	_ Contact the maintenance personnel.
Err4	→ Heater error (Appears at the end of a cycle).	_ Reduce load and then start washing again. If problem still exists, please contact the maintenance personnel.
Err5	→Water level not met in 8 minutes. →The height of the drain hose is below 80 cm. → The drain hose is in water.	_ Make sure that tap is turned on, and water pressure is normal. If problem still exists, please contact the maintenance personnel. _ Install drain hose within 80-100 cm of height. _ Make sure the drain hose is not in water.
Err7	→ Motor error.	_ Power off to resolve it.If problem still exists, please contact the maintenance personnel.
Err8	→ Water exceeds protective level.	_ Power off to resolve it.If problem still exists, please contact the maintenance personnel.
Err9	→ dry temperature sensor error.	_ Power off to resolve it.If problem still exists, please contact the maintenance personnel.
Err10	→ Error of the water level sensor.	_ Power off to resolve it.If problem still exists, please contact the maintenance personnel.
Err12	→ Error of the dry water level sensor.	_Power off to resolve it.If problem still exists, please contact the maintenance personnel.
Err13	→ Dry heating element error.	_ Power off to resolve it.If problem still exists, please contact the maintenance personnel.
Err14	→ Dry motor error.	_ Please contact the Service Center
EuAr	→ The PCB and the motor can't communicate.	_Please contact the maintenance personnel .
End	→ End of wash cycle.	
1:25	→The remaining time is 1 hour 25 minutes.	
19:25	→Status information:Preset time for delayed operation.	
UNb	→Washing machine has an unbalanced load protection function.When unbalanced weight is greater than allowable maximum, the washing machine will not spin and will run at a low speed to avoid abnormal vibration and noise.	1.In case washing 1 piece of laundry (carpet, bed sheet, table sheet, etc) make it symmetrical inside the drum. 2.Lower the wet weight of laundry pieces by wringing manually and placing them back in the drum in symmetrical position. 3.Take out and then reposition the laundry pieces inside the washing machine in a more balanced position on the inner wall of the drum. 4.Add 1 or 2 pieces of laundry into the drum to reduce the unbalanced load effects. 5.Restart the spin cycle by choosing Spin programme.In case the failure persists, please ask a qualified technician to repair it.

### Child lock:

Your appliance has a child lock function. Press and hold 'delay' and 'extra rinse' for 3 seconds, this will switch on the lock function. No buttons will function while this is locked. The unlock press and hold 'delay' and 'extra rinse' for 3 seconds.

### Power off memory function:

In case of a power failure during a wash cycle, the machine will save the selected functions and resume once the power returns.

### To cancel a program:

Press the start/pause button, then turn the selector to the OFF position. The program is now cancelled and a new one can be selected. Once selected press the start/pause button.

Alarm sound can be cancelled if it is needed.Please follow the instruction as below:

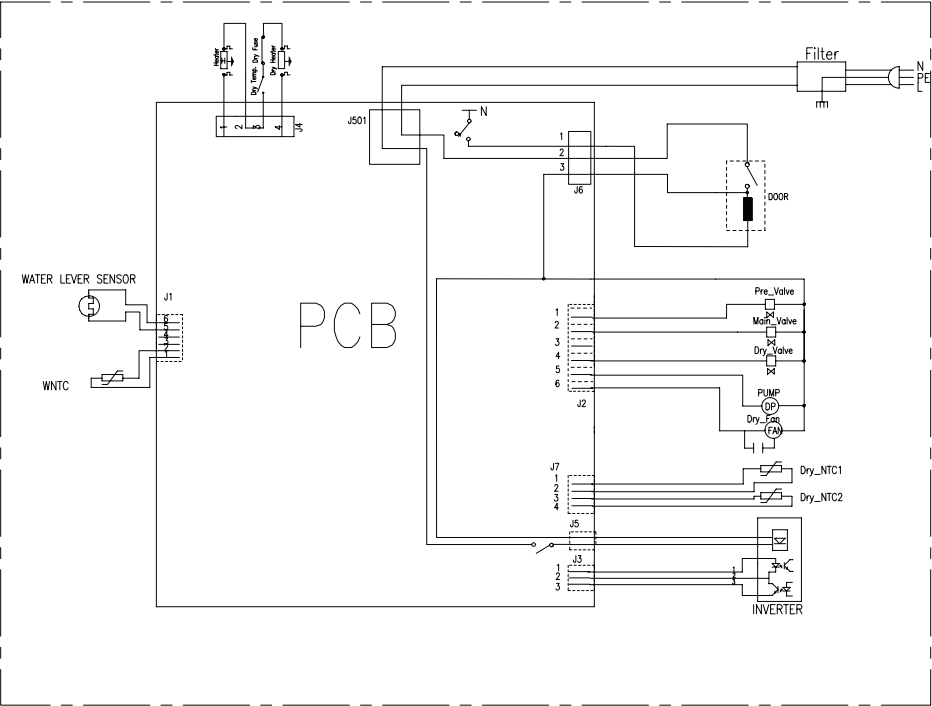
Switch on the washing machine and turn the program knob to spin cycle, then press the " Intense " and " Dry " button, hold on for 3 seconds.The "bEEP OFF" will be displayed on the screen which indicates that alarm sound has been canceled. To operate the above steps again so the alarm sound can be recovered and the display will show "bEEP ON".

## TROUBLESHOOTING

The following circumstances do not constitute problems. Do not contact the Service Center until the problem has been confirmed.

PROBLEM	CAUSES	SOLUTIONS
Washing machine fails to operate.	<ul style="list-style-type: none"> <li>→ Poor connection to the power supply.</li> <li>→ Power failure.</li> <li>→ The washer door is not properly closed.</li> <li>→ Machine has not been switched on.</li> </ul>	<ul style="list-style-type: none"> <li>_ Check connection to the power supply.</li> <li>_ Check the power supply.</li> <li>_ Close the washer door properly.</li> <li>_ Make sure the machine is switched on.</li> </ul>
Washing machine cannot be filled with water.	<ul style="list-style-type: none"> <li>→ The "Start/Pause" button is not pressed.</li> <li>→ Water tap is not turned on.</li> <li>→ Water pressure is less than 0,03 MPa.</li> <li>→ The inlet hose is kinked.</li> <li>→ Water supply failure.</li> <li>→ The program knob is not properly set.</li> <li>→ The washer door is not properly closed.</li> <li>→ The inlet hose filter is blocked.</li> </ul>	<ul style="list-style-type: none"> <li>_ press the "Start/Pause" button.</li> <li>_ Turn on the water tap.</li> <li>_ Check water pressure.</li> <li>_ Check the inlet hose.</li> <li>_ Ensure the water supply.</li> <li>_ Set the program knob properly.</li> <li>_ Close the washer door properly.</li> <li>_ Unblock the inlet hose filter.</li> </ul>
Machine is draining while being filled.	<ul style="list-style-type: none"> <li>→ The height of the drain hose is below 80 cm.</li> <li>→ The drain hose is in water.</li> </ul>	<ul style="list-style-type: none"> <li>_ Install drain hose within 80-100 cm of height.</li> <li>_ Make sure the drain hose is not in water.</li> </ul>
Drainage failure.	<ul style="list-style-type: none"> <li>→ Drain hose is blocked.</li> <li>→ Drain hose end is higher than 100 cm above the floor level.</li> <li>→ The filter is blocked.</li> </ul>	<ul style="list-style-type: none"> <li>_ Unblock the drain hose.</li> <li>_ Make sure the drain hose end is lower than 100 cm above floor level.</li> <li>_ Unblock the filter.</li> </ul>
Strong vibration while spinning.	<ul style="list-style-type: none"> <li>→ Not all transportation bolts have been removed.</li> <li>→ Washing machine is located on an uneven surface or is not level.</li> <li>→ Machine load is over 6 kg.</li> </ul>	<ul style="list-style-type: none"> <li>_ Remove all transportation bolts.</li> <li>_ Make sure the washing machine is on an even surface and levelled.</li> <li>_ Reduce amount of laundry in the drum.</li> </ul>
Operation stops before completing wash cycle.	<ul style="list-style-type: none"> <li>→ Water or electricity failure.</li> <li>→ The "Start/Pause" button is pressed.</li> </ul>	<ul style="list-style-type: none"> <li>_ Check the power supply.</li> <li>_ press the "Start/Pause" button.</li> </ul>
Operation stops for a period of time.	<ul style="list-style-type: none"> <li>→ Washing machine gives an error message.</li> </ul>	<ul style="list-style-type: none"> <li>_ Check display codes.</li> </ul>
Excessive foam in the drum, which is spilled to the distribution drawer.	<ul style="list-style-type: none"> <li>→ The detergent is not a low-foaming type or for manual wash.</li> <li>→ Excessive use of detergent.</li> </ul>	<ul style="list-style-type: none"> <li>_ Check if your detergent is appropriate.</li> <li>_ Reduce amount of detergent in the distribution drawer.</li> </ul>
Automatic adjustment of the washing time.	<ul style="list-style-type: none"> <li>→ The washing program duration will be adjusted according to the initial water temperature.</li> </ul>	<ul style="list-style-type: none"> <li>_ This is normal and doesn't affect the functionality.</li> </ul>
Spinning fails	<ul style="list-style-type: none"> <li>→ The machine has a set drain time before spin</li> <li>→ Unbalance of the laundry</li> </ul>	<ul style="list-style-type: none"> <li>_ Wait for a while before spin</li> <li>_ Reposition the laundry or run a spinning program again.</li> </ul>

# WIRING CIRCUIT



PCB — Printed Circuit Board

NTC — Temperature Sensor







This appliance is marked according to the European directive 2002/96/EC on Waste Electrical and Electronic Equipment (WEEE).

By ensuring this product is disposed of correctly, you will help prevent potential negative consequences for the environment and human health, which could otherwise be caused by inappropriate waste handling of this product.

The symbol on the product indicates that this product may not be treated as household waste. Instead it shall be handed over to the applicable collection point for the recycling of electrical and electronic equipment. Disposal must be carried out in accordance with local environmental regulations for waste disposal. For more detailed information about treatment, recovery and recycling of this product, please contact your local city office, your household waste disposal service or the shop where you purchased the product.



### CE Declarations of Conformity



This appliance has been manufactured to the strictest standards and complies with all applicable legislation, Low Voltage Directive (LVD) and Electromagnetic Compatibility Directive (EMC).

Caple  
Fourth Way  
Avonmouth  
Bristol  
BS11 8DW  
[www.caple.co.uk](http://www.caple.co.uk)

0020507671